

# MAD1 IHC Antibody

Rabbit Polyclonal

Antigen Affinity Purified

Protein ID Q9Y6D9

Catalog No. IHC-00184

GeneID 8379

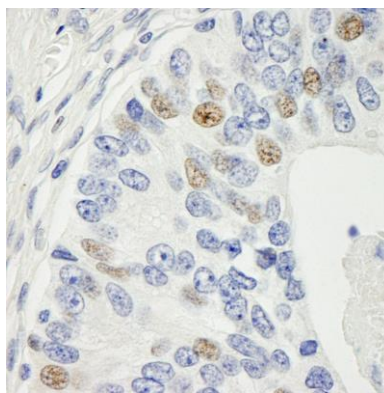
Lot No. IHC-00184-1



APPLICATIONS	IHC
SPECIES REACTIVITY	Human
AMOUNT	100 µl
CONCENTRATION	250 µg/ml
STORAGE/SHELF LIFE	2 – 8° C / 1 year from date of receipt
PHYSICAL STATE	Liquid
BUFFER	Tris-buffered Saline containing 0.1% BSA and 0.09% Sodium Azide
ISOTYPE	IgG
ORIGIN	USA
PRODUCTION PROCEDURES	<p>Antibody was affinity purified using an epitope specific to MAD1 immobilized on solid support.</p> <p>The epitope recognized by IHC-00184 maps to a region between residues 1 and 50 of human Mitotic arrest deficient-like 1 using the numbering given in Swiss-Prot entry Q9Y6D9 (GeneID 8379).</p>
APPLICATIONS	<p>Centrifuge tube to remove product from lid. Optimal working dilutions should be determined experimentally by the investigator. Prepare working dilution immediately before use.</p> <p>Immunohistochemistry 1:100 – 1:500</p>
APPLICATION NOTES	<p>Epitope exposure is recommended.</p> <p>Epitope exposure with citrate buffer will enhance staining.</p> <p>Likely to work with frozen sections.</p> <p>In some cases, the antibody may be diluted further than indicated.</p>
IHC HUMAN CONTROLS	Breast Carcinoma, Laryngeal Squamous Cell Carcinoma, Metastatic Lymph Node, Prostate Carcinoma
ADDITIONAL INFO	<p><a href="https://www.bethyl.com/product/IHC-00184">https://www.bethyl.com/product/IHC-00184</a></p> <p>Use the link above to view SDS, a current list of citations, and other product specific information.</p>

This document certifies that this product has met all of the quality control standards defined by Bethyl Laboratories, Inc.  
Eric McIntush, PhD | Chief Scientific Officer

Date: June 21, 2019

**Detection of human MAD1 by immunohistochemistry.**

*Sample:* FFPE section of human prostate adenocarcinoma.

*Antibody:* Affinity purified rabbit anti-MAD1 (Cat. No. IHC-00184) used at a dilution of 1:250. *Detection:* DAB