

MED18 IHC Antibody

Rabbit Polyclonal

Antigen Affinity Purified

Protein ID NP_060108.1

Catalog No. IHC-00181

GeneID 54797

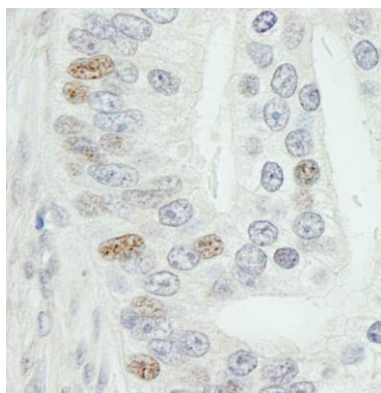
Lot No. IHC-00181-1



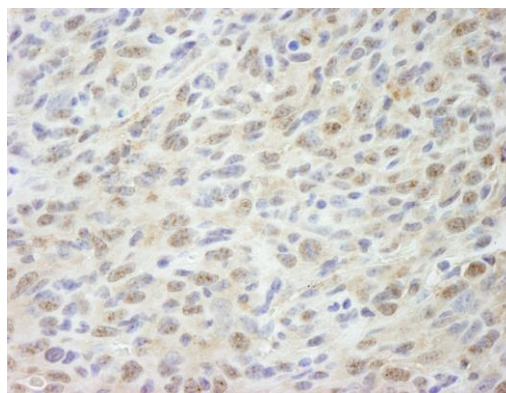
APPLICATIONS	IHC
SPECIES REACTIVITY	Human, Mouse
PRESUMED REACTIVITY	Based on 100% sequence identity, this antibody is predicted to react with Rat, Zebrafish, Bovine, Dog, Horse, Rabbit, Guinea pig_10141, Pig, Panda, Orangutan, Monkey, Gorilla, Chimpanzee and Teleostei
AMOUNT	100 µl
CONCENTRATION	250 µg/ml
STORAGE/SHELF LIFE	2 – 8° C / 1 year from date of receipt
PHYSICAL STATE	Liquid
BUFFER	Tris-buffered Saline containing 0.1% BSA and 0.09% Sodium Azide
ISOTYPE	IgG
ORIGIN	USA
PRODUCTION PROCEDURES	Antibody was affinity purified using an epitope specific to MED18 immobilized on solid support. The epitope recognized by IHC-00181 maps to a region between residues 150 and the C-terminus (residue 208) of human Mediator of RNA Polymerase II Transcription, subunit 18 using the numbering given in entry NP_060108.1 (GeneID 54797).
APPLICATIONS	Centrifuge tube to remove product from lid. Optimal working dilutions should be determined experimentally by the investigator. Prepare working dilution immediately before use. Immunohistochemistry 1:100 – 1:500
APPLICATION NOTES	Epitope exposure is recommended. Epitope exposure with citrate buffer will enhance staining. Likely to work with frozen sections. In some cases, the antibody may be diluted further than indicated.
IHC HUMAN CONTROLS	Breast Carcinoma, Ovarian Carcinoma, Prostate Carcinoma, Small Cell Lung Cancer, Stomach Adenocarcinoma
IHC MOUSE CONTROLS	Squamous Cell Carcinoma
ADDITIONAL INFO	https://www.bethyl.com/product/IHC-00181 Use the link above to view SDS, a current list of citations, and other product specific information.

This document certifies that this product has met all of the quality control standards defined by Bethyl Laboratories, Inc.
Eric McIntush, PhD | Chief Scientific Officer

Date: June 21, 2019



Detection of human MED18 by immunohistochemistry.
Sample: FFPE section of human prostate adenocarcinoma.
Antibody: Affinity purified rabbit anti-MED18 (Cat. No. IHC-00181) used at a dilution of 1:250. *Detection:* DAB



Detection of mouse MED18 by immunohistochemistry.
Sample: FFPE section of mouse squamous cell carcinoma.
Antibody: Affinity purified rabbit anti-MED18 (Cat. No. IHC-00181) used at a dilution of 1:250. *Detection:* DAB