

# MED12 IHC Antibody

Rabbit Polyclonal

Antigen Affinity Purified

Protein ID NP\_005111.1

Catalog No. IHC-00180

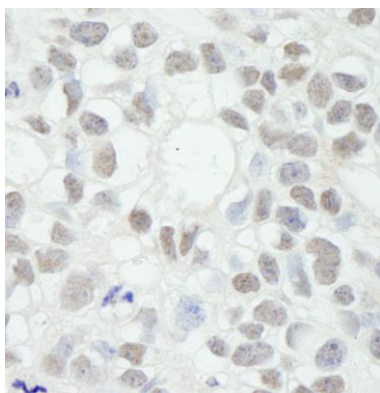
GeneID 9968

Lot No. IHC-00180-1



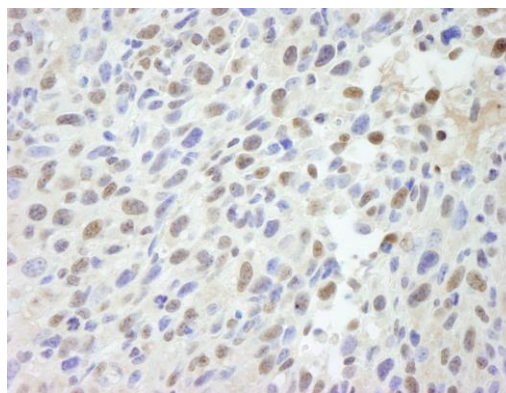
<b>APPLICATIONS</b>	IHC
<b>SPECIES REACTIVITY</b>	Human, Mouse
<b>PRESUMED REACTIVITY</b>	Based on 100% sequence identity, this antibody is predicted to react with Rat, Bovine, Dog, Pig, Panda, Orangutan, Monkey, Chimpanzee, Naked mole rat and Small-eared galago
<b>AMOUNT</b>	100 µl
<b>CONCENTRATION</b>	250 µg/ml
<b>STORAGE/SHELF LIFE</b>	2 – 8° C / 1 year from date of receipt
<b>PHYSICAL STATE</b>	Liquid
<b>BUFFER</b>	Tris-buffered Saline containing 0.1% BSA and 0.09% Sodium Azide
<b>ISOTYPE</b>	IgG
<b>ORIGIN</b>	USA
<b>PRODUCTION PROCEDURES</b>	<p>Antibody was affinity purified using an epitope specific to MED12 immobilized on solid support.</p> <p>The epitope recognized by IHC-00180 maps to a region between residues 2150 and the C-terminus (residue 2212) of human Mediator of RNA Polymerase II Transcription, subunit 12 using the numbering given in entry NP_005111.1 (GeneID 9968).</p>
<b>APPLICATIONS</b>	<p>Centrifuge tube to remove product from lid. Optimal working dilutions should be determined experimentally by the investigator. Prepare working dilution immediately before use.</p> <p>Immunohistochemistry 1:100 – 1:500</p>
<b>APPLICATION NOTES</b>	<p>Epitope exposure is recommended.</p> <p>Epitope exposure with citrate buffer will enhance staining.</p> <p>Likely to work with frozen sections.</p> <p>In some cases, the antibody may be diluted further than indicated.</p>
<b>IHC HUMAN CONTROLS</b>	Breast Carcinoma, Hodgkins Lymphoma, Ovarian Carcinoma, Skin Basal Cell Carcinoma, Skin Squamous Cell Carcinoma
<b>IHC MOUSE CONTROLS</b>	Squamous Cell Carcinoma
<b>ADDITIONAL INFO</b>	<p><a href="https://www.bethyl.com/product/IHC-00180">https://www.bethyl.com/product/IHC-00180</a></p> <p>Use the link above to view SDS, a current list of citations, and other product specific information.</p>

This document certifies that this product has met all of the quality control standards defined by Bethyl Laboratories, Inc.  
Eric McIntush, PhD | Chief Scientific Officer Date: June 21, 2019

**Detection of human MED12 by immunohistochemistry.**

*Sample:* FFPE section of human breast adenocarcinoma.

*Antibody:* Affinity purified rabbit anti-MED12 (Cat. No. IHC-00180) used at a dilution of 1:250. *Detection:* DAB

**Detection of mouse MED12 by immunohistochemistry.**

*Sample:* FFPE section of mouse squamous cell carcinoma.

*Antibody:* Affinity purified rabbit anti-MED12 (Cat. No. IHC-00180) used at a dilution of 1:250. *Detection:* DAB