

CSN2 IHC Antibody

Rabbit Polyclonal

Antigen Affinity Purified

Protein ID NP_004227.1

Catalog No. IHC-00179

GeneID 9318

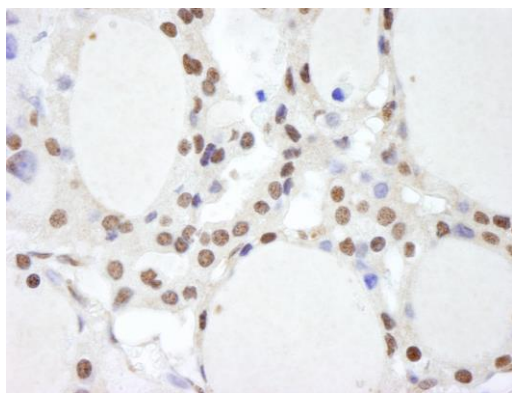
Lot No. IHC-00179-1



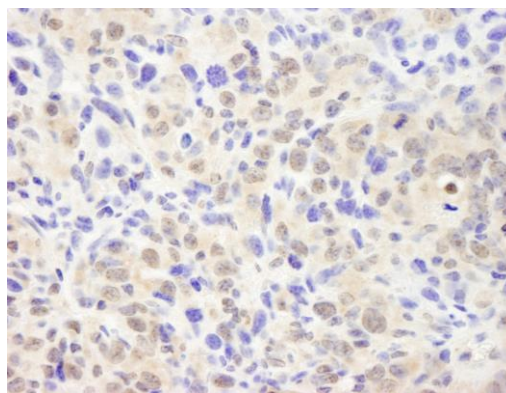
APPLICATIONS	IHC
SPECIES REACTIVITY	Human, Mouse
PRESUMED REACTIVITY	Based on 100% sequence identity, this antibody is predicted to react with Rat, Zebrafish, X. laevis, X. tropicalis, Chicken, Bovine, Dog, Horse, Rabbit, Guinea pig_10141, Pig, Panda and Orangutan
AMOUNT	100 µl
CONCENTRATION	100 µg/ml
STORAGE/SHELF LIFE	2 – 8° C / 1 year from date of receipt
PHYSICAL STATE	Liquid
BUFFER	Tris-buffered Saline containing 0.1% BSA and 0.09% Sodium Azide
ISOTYPE	IgG
ORIGIN	USA
PRODUCTION PROCEDURES	Antibody was affinity purified using an epitope specific to CSN2 immobilized on solid support. The epitope recognized by IHC-00179 maps to a region between residues 1 and 50 of human COP9 constitutive photomorphogenic homolog subunit 2 using the numbering given in entry NP_004227.1 (GeneID 9318).
APPLICATIONS	Centrifuge tube to remove product from lid. Optimal working dilutions should be determined experimentally by the investigator. Prepare working dilution immediately before use. Immunohistochemistry 1:100 – 1:500
APPLICATION NOTES	Epitope exposure is recommended. Epitope exposure with citrate buffer will enhance staining. Likely to work with frozen sections. In some cases, the antibody may be diluted further than indicated.
IHC HUMAN CONTROLS	Anaplastic Thyroid Carcinoma, Bladder Cell Carcinoma, Breast Carcinoma, Ovarian Carcinoma, Prostate Carcinoma, Skin Basal Cell Carcinoma, Small Cell Lung Cancer
IHC MOUSE CONTROLS	Squamous Cell Carcinoma
ADDITIONAL INFO	https://www.bethyl.com/product/IHC-00179 Use the link above to view SDS, a current list of citations, and other product specific information.

This document certifies that this product has met all of the quality control standards defined by Bethyl Laboratories, Inc.
Eric McIntush, PhD | Chief Scientific Officer

Date: June 21, 2019

**Detection of human CSN2 by immunohistochemistry.**

Sample: FFPE section of human anaplastic thyroid carcinoma. *Antibody:* Affinity purified rabbit anti-CSN2 (Cat. No. IHC-00179) used at a dilution of 1:500. *Detection:* DAB

**Detection of mouse CSN2 by immunohistochemistry.**

Sample: FFPE section of mouse squamous cell carcinoma. *Antibody:* Affinity purified rabbit anti-CSN2 (Cat. No. IHC-00179) used at a dilution of 1:500. *Detection:* DAB