

HMG2a IHC Antibody

Rabbit Polyclonal

Antigen Affinity Purified

Protein ID NP_005333.2

Catalog No. IHC-00173

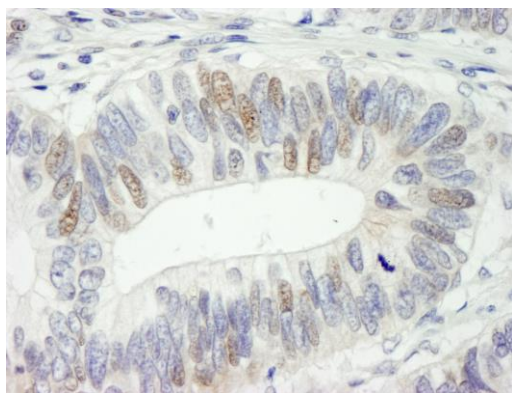
GeneID 3149

Lot No. IHC-00173-1

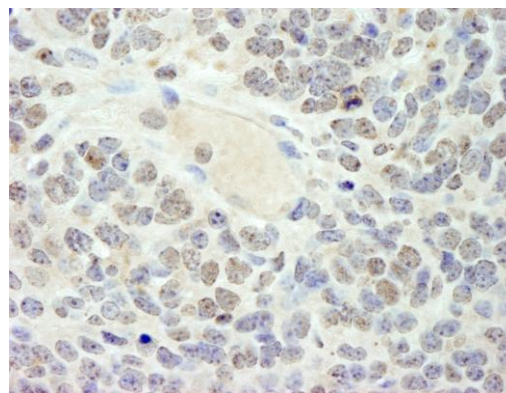


| | |
|------------------------------|--|
| APPLICATIONS | IHC |
| SPECIES REACTIVITY | Human, Mouse |
| PRESUMED REACTIVITY | Based on 100% sequence identity, this antibody is predicted to react with Rat, Dog, Horse, Rabbit, Guinea pig_10141, Pig, Panda, Orangutan, Monkey, Gorilla, Chimpanzee and Crab-eating macaque |
| AMOUNT | 100 µl |
| CONCENTRATION | 250 µg/ml |
| STORAGE/SHELF LIFE | 2 - 8° C / 1 year from date of receipt |
| PHYSICAL STATE | Liquid |
| BUFFER | Tris-buffered Saline containing 0.1% BSA and 0.09% Sodium Azide |
| ISOTYPE | IgG |
| ORIGIN | USA |
| PRODUCTION PROCEDURES | Antibody was affinity purified using an epitope specific to HMG2a immobilized on solid support. The epitope recognized by IHC-00173 maps to a region between residues 125 and 175 of human High-Mobility Group 2A using the numbering given in entry NP_005333.2 (GeneID 3149). |
| APPLICATIONS | Centrifuge tube to remove product from lid. Optimal working dilutions should be determined experimentally by the investigator. Prepare working dilution immediately before use. Immunohistochemistry 1:100 - 1:500 |
| APPLICATION NOTES | Epitope exposure is recommended. Epitope exposure with citrate buffer will enhance staining. Likely to work with frozen sections. |
| IHC HUMAN CONTROLS | In some cases, the antibody may be diluted further than indicated. Breast Carcinoma, Colon Carcinoma, Metastatic Lymph Node, Non-Small Cell Lung Cancer, Ovarian Carcinoma, Pancreatic Islet Cell Tumor, Prostate Carcinoma, Skin Basal Cell Carcinoma, Stomach Adenocarcinoma, Testicular Seminoma |
| IHC MOUSE CONTROLS | Squamous Cell Carcinoma, Teratoma |
| ADDITIONAL INFO | https://www.bethyl.com/product/IHC-00173 Use the link above to view SDS, a current list of citations, and other product specific information. |

This document certifies that this product has met all of the quality control standards defined by Bethyl Laboratories, Inc.
Eric McIntush, PhD | Chief Scientific Officer Date: June 21, 2019

**Detection of human HMG2a by immunohistochemistry.**

Sample: FFPE section of human colon adenocarcinoma. *Antibody:* Affinity purified rabbit anti-HMG2a (Cat. No. IHC-00173) used at a dilution of 1:250. *Detection:* DAB

**Detection of mouse HMG2a by immunohistochemistry.**

Sample: FFPE section of mouse teratoma. *Antibody:* Affinity purified rabbit anti-HMG2a (Cat. No. IHC-00173) used at a dilution of 1:250. *Detection:* DAB