

Topo II Beta IHC Antibody

Rabbit Polyclonal

Antigen Affinity Purified

Protein ID NP_001059.2

Catalog No. IHC-00166

GeneID 7155

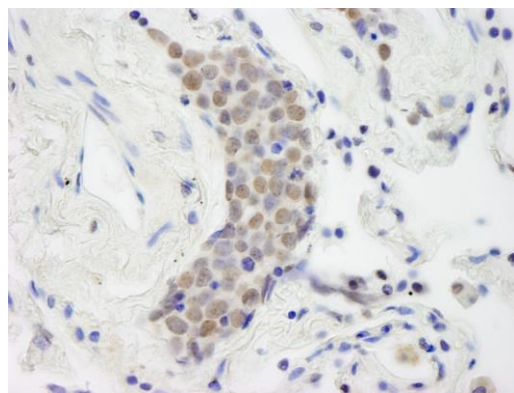
Lot No. IHC-00166-1



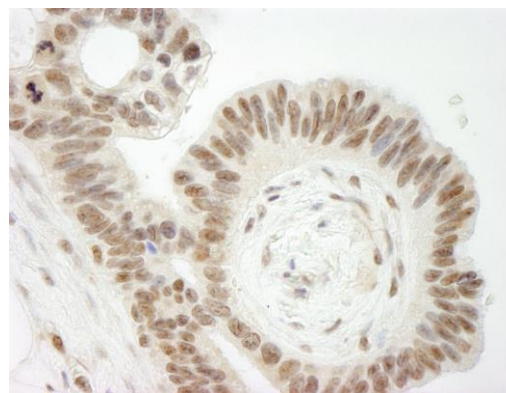
APPLICATIONS	IHC
SPECIES REACTIVITY	Human
PRESUMED REACTIVITY	Based on 100% sequence identity, this antibody is predicted to react with Little brown bat and White-tufted-ear marmoset
AMOUNT	100 µl
CONCENTRATION	50 µg/ml
STORAGE/SHELF LIFE	2 – 8° C / 1 year from date of receipt
PHYSICAL STATE	Liquid
BUFFER	Tris-buffered Saline containing 0.1% BSA and 0.09% Sodium Azide
ISOTYPE	IgG
ORIGIN	USA
PRODUCTION PROCEDURES	<p>Antibody was affinity purified using an epitope specific to Topo II Beta immobilized on solid support.</p> <p>The epitope recognized by IHC-00166 maps to a region between residues 1570 and the C-terminus (residue 1621) of human DNA Topoisomerase II Beta using the numbering given in entry NP_001059.2 (GeneID 7155).</p>
APPLICATIONS	<p>Centrifuge tube to remove product from lid. Optimal working dilutions should be determined experimentally by the investigator. Prepare working dilution immediately before use.</p> <p>Immunohistochemistry 1:100 – 1:500</p>
APPLICATION NOTES	<p>Epitope exposure is recommended.</p> <p>Epitope exposure with citrate buffer will enhance staining.</p> <p>Likely to work with frozen sections.</p>
IHC HUMAN CONTROLS	<p>In some cases, the antibody may be diluted further than indicated.</p> <p>Breast Carcinoma, Colon Carcinoma, Metastatic Lymph Node, Non-Small Cell Lung Cancer, Ovarian Carcinoma, Prostate Carcinoma, Skin Basal Cell Carcinoma, Small Cell Lung Cancer, Stomach Adenocarcinoma</p>
ADDITIONAL INFO	<p>https://www.bethyl.com/product/IHC-00166</p> <p>Use the link above to view SDS, a current list of citations, and other product specific information.</p>

This document certifies that this product has met all of the quality control standards defined by Bethyl Laboratories, Inc.
Eric McIntush, PhD | Chief Scientific Officer

Date: June 21, 2019



Detection of human Topo II Beta by immunohistochemistry. *Sample:* FFPE section of human small cell lung cancer. *Antibody:* Affinity purified rabbit anti-Topo II Beta (Cat. No. IHC-00166) used at a dilution of 1:250. *Detection:* DAB



Detection of human Topo II Beta by immunohistochemistry. *Sample:* FFPE section of human ovarian cancer. *Antibody:* Affinity purified rabbit anti-Topo II Beta (Cat. No. IHC-00166) used at a dilution of 1:250. *Detection:* DAB