

# RbBP7 IHC Antibody

Rabbit Polyclonal

Antigen Affinity Purified

Protein ID AAC50231.1

Catalog No. IHC-00160

GeneID 5931

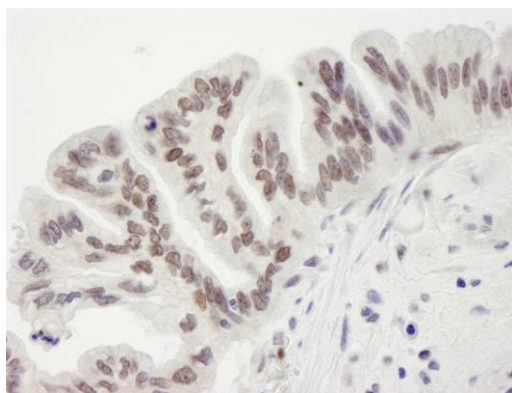
Lot No. IHC-00160-1



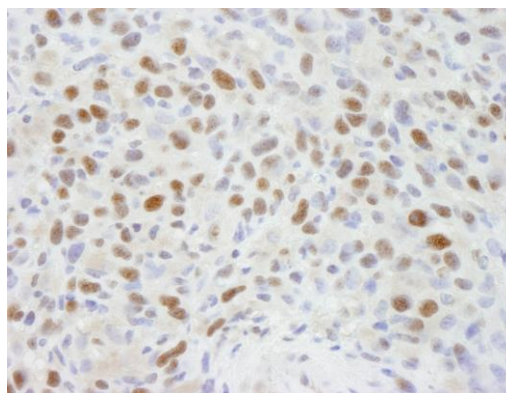
<b>APPLICATIONS</b>	IHC
<b>SPECIES REACTIVITY</b>	Human, Mouse
<b>PRESUMED REACTIVITY</b>	Based on 100% sequence identity, this antibody is predicted to react with Rat, Dog, Horse, Guinea pig_10141, Pig, Panda, Orangutan, Monkey, Chimpanzee, Naked mole rat and Chinese hamster
<b>AMOUNT</b>	100 µl
<b>CONCENTRATION</b>	100 µg/ml
<b>STORAGE/SHELF LIFE</b>	2 – 8° C / 1 year from date of receipt
<b>PHYSICAL STATE</b>	Liquid
<b>BUFFER</b>	Tris-buffered Saline containing 0.1% BSA and 0.09% Sodium Azide
<b>ISOTYPE</b>	IgG
<b>ORIGIN</b>	USA
<b>PRODUCTION PROCEDURES</b>	Antibody was affinity purified using an epitope specific to RbBP7 immobilized on solid support.  The epitope recognized by IHC-00160 maps to a region between residue 375 and the C-terminus (residue 425) of human Retinoblastoma Binding Protein 7 using the numbering given in entry AAC50231.1 (GeneID 5931).
<b>APPLICATIONS</b>	Centrifuge tube to remove product from lid. Optimal working dilutions should be determined experimentally by the investigator. Prepare working dilution immediately before use.  Immunohistochemistry 1:100 – 1:500
<b>APPLICATION NOTES</b>	Epitope exposure is recommended.  Epitope exposure with citrate buffer will enhance staining.  Likely to work with frozen sections.  In some cases, the antibody may be diluted further than indicated.
<b>IHC HUMAN CONTROLS</b>	Breast Carcinoma, Colon Carcinoma, Laryngeal Squamous Cell Carcinoma, Linitis Plastica Stomach Cancer, Metastatic Lymph Node, Non-Small Cell Lung Cancer, Ovarian Carcinoma, Pancreatic Islet Cell Tumor, Prostate Carcinoma, Skin Basal Cell Carcinoma, Skin Squamous Cell Carcinoma, Small Cell Lung Cancer, Stomach Adenocarcinoma, Testicular Seminoma
<b>IHC MOUSE CONTROLS</b>	Colon Carcinoma CT26, Fibroma, Squamous Cell Carcinoma, Teratoma
<b>ADDITIONAL INFO</b>	<a href="https://www.bethyl.com/product/IHC-00160">https://www.bethyl.com/product/IHC-00160</a> Use the link above to view SDS, a current list of citations, and other product specific information.

This document certifies that this product has met all of the quality control standards defined by Bethyl Laboratories, Inc.  
Eric McIntush, PhD | Chief Scientific Officer

Date: June 21, 2019



**Detection of human RBBP7 by immunohistochemistry.**  
*Sample:* FFPE section of human ovarian tumor. *Antibody:* Affinity purified rabbit anti-RBBP7 (Cat. No. IHC-00160) used at a dilution of 1:250. *Detection:* DAB



**Detection of mouse RBBP7 by immunohistochemistry.**  
*Sample:* FFPE section of mouse squamous cell carcinoma. *Antibody:* Affinity purified rabbit anti-RBBP7 (Cat. No. IHC-00160) used at a dilution of 1:250. *Detection:* DAB