

SPTBN1 IHC Antibody

Rabbit Polyclonal

Antigen Affinity Purified

Protein ID NP_003119.2

Catalog No. IHC-00157

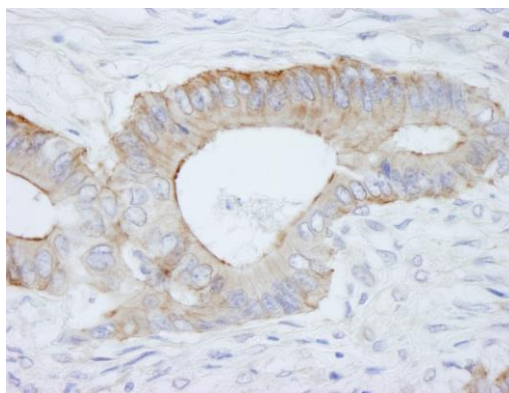
GeneID 6711

Lot No. IHC-00157-1



| | |
|------------------------------|--|
| APPLICATIONS | IHC |
| SPECIES REACTIVITY | Human |
| AMOUNT | 100 µl |
| CONCENTRATION | 250 µg/ml |
| STORAGE/SHELF LIFE | 2 – 8° C / 1 year from date of receipt |
| PHYSICAL STATE | Liquid |
| BUFFER | Tris-buffered Saline containing 0.1% BSA and 0.09% Sodium Azide |
| ISOTYPE | IgG |
| ORIGIN | USA |
| PRODUCTION PROCEDURES | Antibody was affinity purified using an epitope specific to SPTBN1 immobilized on solid support. The epitope recognized by IHC-00157 maps to a region between residues 2150 and 2200 of human Spectrin Non-Erythroid Beta 1 using the numbering given in entry NP_003119.2 (GeneID 6711). |
| APPLICATIONS | Centrifuge tube to remove product from lid. Optimal working dilutions should be determined experimentally by the investigator. Prepare working dilution immediately before use. Immunohistochemistry 1:100 – 1:500 |
| APPLICATION NOTES | Epitope exposure is recommended. Epitope exposure with citrate buffer will enhance staining. Likely to work with frozen sections. In some cases, the antibody may be diluted further than indicated. |
| IHC HUMAN CONTROLS | Colon Carcinoma |
| ADDITIONAL INFO | https://www.bethyl.com/product/IHC-00157 Use the link above to view SDS, a current list of citations, and other product specific information. |

This document certifies that this product has met all of the quality control standards defined by Bethyl Laboratories, Inc.
Eric McIntush, PhD | Chief Scientific Officer Date: June 21, 2019

**Detection of human SPTBN1 by immunohistochemistry.**

Sample: FFPE section of human colon adenocarcinoma.
Antibody: Affinity purified rabbit anti-SPTBN1 (Cat. No. IHC-00157) used at a dilution of 1:250. *Detection:* DAB