

RCC2 IHC Antibody

Rabbit Polyclonal

Antigen Affinity Purified

Protein ID NP_061185.1

Catalog No. IHC-00155

GeneID 55920

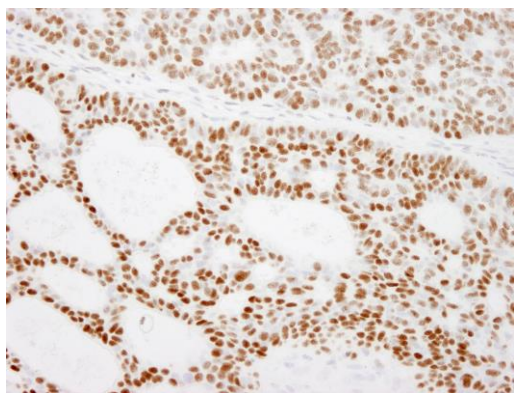
Lot No. IHC-00155-1



APPLICATIONS	IHC
SPECIES REACTIVITY	Human, Mouse
PRESUMED REACTIVITY	Based on 100% sequence identity, this antibody is predicted to react with Dog, Horse, Pig, Panda, Orangutan, Monkey, Chimpanzee, Northern white-cheeked gibbon, Little brown bat and Small-eared galago
AMOUNT	100 µl
CONCENTRATION	100 µg/ml
STORAGE/SHELF LIFE	2 – 8° C / 1 year from date of receipt
PHYSICAL STATE	Liquid
BUFFER	Tris-buffered Saline containing 0.1% BSA and 0.09% Sodium Azide
ISOTYPE	IgG
ORIGIN	USA
PRODUCTION PROCEDURES	Antibody was affinity purified using an epitope specific to RCC2 immobilized on solid support. The epitope recognized by IHC-00155 maps to a region between residues 475 and the C-terminus (residue 522) of human Regulator of Chromosome Condensation 2 using the numbering given in entry NP_061185.1 (GeneID 55920).
APPLICATIONS	Centrifuge tube to remove product from lid. Optimal working dilutions should be determined experimentally by the investigator. Prepare working dilution immediately before use. Immunohistochemistry 1:100 – 1:500
APPLICATION NOTES	Epitope exposure is recommended. Epitope exposure with citrate buffer will enhance staining. Likely to work with frozen sections. In some cases, the antibody may be diluted further than indicated.
IHC HUMAN CONTROLS	Breast Carcinoma, Colon Carcinoma, Laryngeal Squamous Cell Carcinoma, Linitis Plastica Stomach Cancer, Metastatic Lymph Node, Ovarian Carcinoma, Prostate Carcinoma, Skin Basal Cell Carcinoma, Small Cell Lung Cancer, Stomach Adenocarcinoma, Testicular Seminoma
IHC MOUSE CONTROLS	Colon Carcinoma CT26, Fibroma, Squamous Cell Carcinoma, Teratoma
ADDITIONAL INFO	https://www.bethyl.com/product/IHC-00155 Use the link above to view SDS, a current list of citations, and other product specific information.

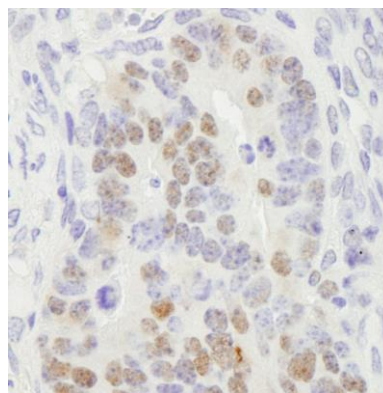
This document certifies that this product has met all of the quality control standards defined by Bethyl Laboratories, Inc.
Eric McIntush, PhD | Chief Scientific Officer

Date: June 21, 2019

**Detection of human RCC2 by immunohistochemistry.**

Sample: FFPE section of human basal cell carcinoma.

Antibody: Affinity purified rabbit anti-RCC2 (Cat. No. IHC-00155) used at a dilution of 1:500. *Detection:* DAB

**Detection of mouse RCC2 by immunohistochemistry.**

Sample: FFPE section of mouse teratoma. *Antibody:* Affinity purified rabbit anti-RCC2 (Cat. No. IHC-00155) used at a dilution of 1:100. *Detection:* DAB