

PPP4C IHC Antibody

Rabbit Polyclonal

Antigen Affinity Purified

Protein ID NP_002711.1

Catalog No. IHC-00154

GeneID 5531

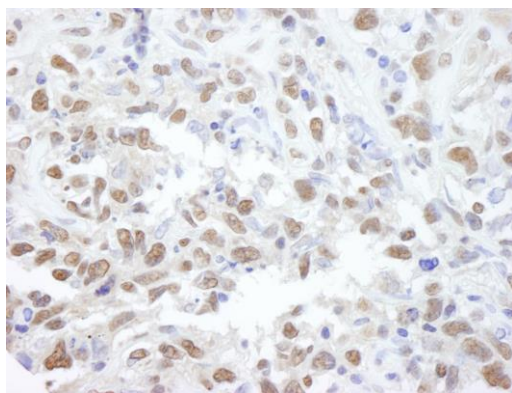
Lot No. IHC-00154-1



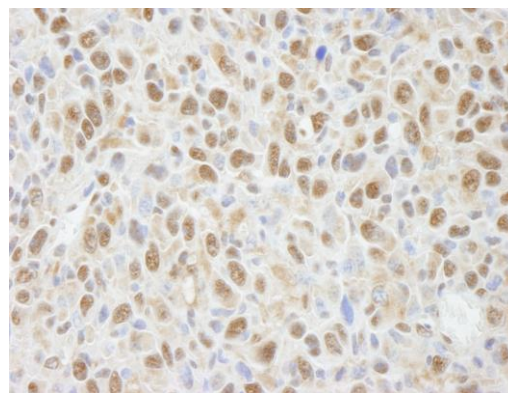
| | |
|------------------------------|--|
| APPLICATIONS | IHC |
| SPECIES REACTIVITY | Human, Mouse |
| PRESUMED REACTIVITY | Based on 100% sequence identity, this antibody is predicted to react with Rat, Bovine, Dog, Horse, Rabbit, Guinea pig_10141, Panda, Orangutan, Monkey, Gorilla, Chimpanzee and Tasmanian devil |
| AMOUNT | 100 µl |
| CONCENTRATION | 100 µg/ml |
| STORAGE/SHELF LIFE | 2 – 8° C / 1 year from date of receipt |
| PHYSICAL STATE | Liquid |
| BUFFER | Tris-buffered Saline containing 0.1% BSA and 0.09% Sodium Azide |
| ISOTYPE | IgG |
| ORIGIN | USA |
| PRODUCTION PROCEDURES | Antibody was affinity purified using an epitope specific to PPP4C immobilized on solid support. The epitope recognized by IHC-00154 maps to a region between residues 1 and 50 of human Protein Phosphatase 4, Catalytic Subunit using the numbering given in entry NP_002711.1 (GeneID 5531). |
| APPLICATIONS | Centrifuge tube to remove product from lid. Optimal working dilutions should be determined experimentally by the investigator. Prepare working dilution immediately before use. Immunohistochemistry 1:100 – 1:500 |
| APPLICATION NOTES | Epitope exposure is recommended. Epitope exposure with citrate buffer will enhance staining. Likely to work with frozen sections. |
| IHC HUMAN CONTROLS | In some cases, the antibody may be diluted further than indicated. Breast Carcinoma, Colon Carcinoma, Laryngeal Squamous Cell Carcinoma, Linitis Plastica Stomach Cancer, Metastatic Lymph Node, Non-Small Cell Lung Cancer, Ovarian Carcinoma, Pancreatic Islet Cell Tumor, Prostate Carcinoma, Skin Basal Cell Carcinoma, Small Cell Lung Cancer, Stomach Adenocarcinoma, Testicular Seminoma |
| IHC MOUSE CONTROLS | Squamous Cell Carcinoma |
| ADDITIONAL INFO | https://www.bethyl.com/product/IHC-00154 Use the link above to view SDS, a current list of citations, and other product specific information. |

This document certifies that this product has met all of the quality control standards defined by Bethyl Laboratories, Inc.
Eric McIntush, PhD | Chief Scientific Officer

Date: June 21, 2019



Detection of human PPP4C by immunohistochemistry.
Sample: FFPE section of human metastatic lymph node.
Antibody: Affinity purified rabbit anti-PPP4C (Cat. No. IHC-00154) used at a dilution of 1:500. *Detection:* DAB



Detection of mouse PPP4C by immunohistochemistry.
Sample: FFPE section of mouse squamous cell carcinoma.
Antibody: Affinity purified rabbit anti-PPP4C (Cat. No. IHC-00154) used at a dilution of 1:100. *Detection:* DAB