

DDX21 IHC Antibody

Rabbit Polyclonal

Antigen Affinity Purified

Protein ID NP_004719.2

Catalog No. IHC-00153

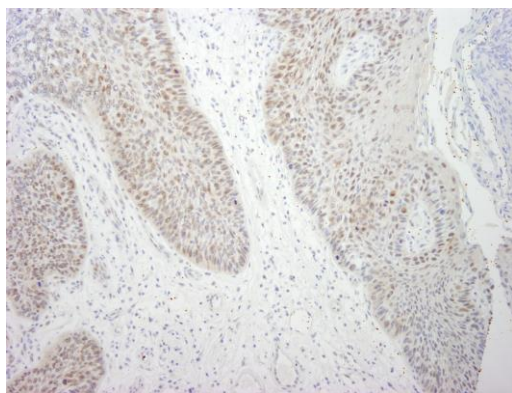
GeneID 9188

Lot No. IHC-00153-1



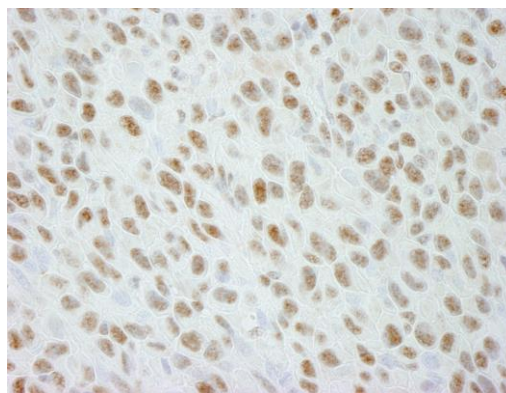
APPLICATIONS	IHC
SPECIES REACTIVITY	Human, Mouse
PRESUMED REACTIVITY	Based on 100% sequence identity, this antibody is predicted to react with Rat, Dog, Horse, Pig, Panda, Orangutan, Monkey, Gorilla, Chimpanzee and Northern white-cheeked gibbon
AMOUNT	100 µl
CONCENTRATION	250 µg/ml
STORAGE/SHELF LIFE	2 – 8° C / 1 year from date of receipt
PHYSICAL STATE	Liquid
BUFFER	Tris-buffered Saline containing 0.1% BSA and 0.09% Sodium Azide
ISOTYPE	IgG
ORIGIN	USA
PRODUCTION PROCEDURES	<p>Antibody was affinity purified using an epitope specific to DDX21 immobilized on solid support.</p> <p>The epitope recognized by IHC-00153 maps to a region between residues 725 and the C-terminus (residue 783) of human DEAD/H (Asp-Glu-Ala-Asp/His) Box Polypeptide 21 using the numbering given in entry NP_004719.2 (GeneID 9188).</p>
APPLICATIONS	<p>Centrifuge tube to remove product from lid. Optimal working dilutions should be determined experimentally by the investigator. Prepare working dilution immediately before use.</p> <p>Immunohistochemistry 1:100 – 1:500</p>
APPLICATION NOTES	<p>Epitope exposure is recommended.</p> <p>Epitope exposure with citrate buffer will enhance staining.</p> <p>Likely to work with frozen sections.</p> <p>In some cases, the antibody may be diluted further than indicated.</p>
IHC HUMAN CONTROLS	Breast Carcinoma, Laryngeal Squamous Cell Carcinoma, Linitis Plastica Stomach Cancer, Metastatic Lymph Node, Ovarian Carcinoma, Testicular Seminoma
IHC MOUSE CONTROLS	Squamous Cell Carcinoma
ADDITIONAL INFO	<p>https://www.bethyl.com/product/IHC-00153</p> <p>Use the link above to view SDS, a current list of citations, and other product specific information.</p>

This document certifies that this product has met all of the quality control standards defined by Bethyl Laboratories, Inc.
Eric McIntush, PhD | Chief Scientific Officer Date: June 21, 2019

**Detection of human DDX21 by immunohistochemistry.**

Sample: FFPE section of human larynx squamous cell carcinoma. *Antibody:* Affinity purified rabbit anti-DDX21 (Cat. No. IHC-00153) used at a dilution of 1:250.

Detection: DAB

**Detection of mouse DDX21 by immunohistochemistry.**

Sample: FFPE section of mouse squamous cell carcinoma.

Antibody: Affinity purified rabbit anti-DDX21 (Cat. No. IHC-00153) used at a dilution of 1:250. *Detection:* DAB