

# DDX24 IHC Antibody

Rabbit Polyclonal

Antigen Affinity Purified

Protein ID NP\_065147.1

Catalog No. IHC-00152

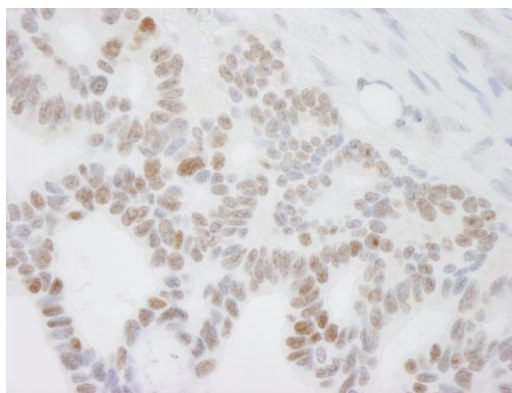
GeneID 57062

Lot No. IHC-00152-1

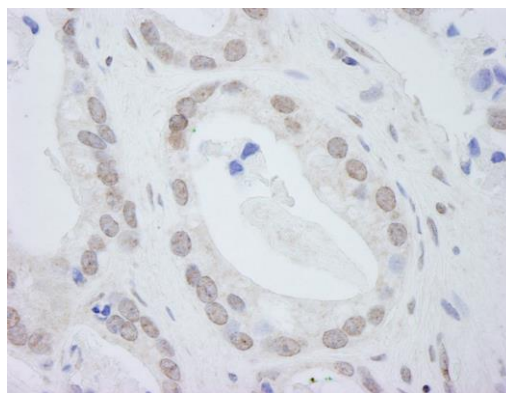


<b>APPLICATIONS</b>	IHC
<b>SPECIES REACTIVITY</b>	Human
<b>PRESUMED REACTIVITY</b>	Based on 100% sequence identity, this antibody is predicted to react with Dog, Panda, Orangutan, Monkey, Gorilla, Chimpanzee, Northern white-cheeked gibbon, Small-eared galago and Crab-eating macaque
<b>AMOUNT</b>	100 µl
<b>CONCENTRATION</b>	250 µg/ml
<b>STORAGE/SHELF LIFE</b>	2 – 8° C / 1 year from date of receipt
<b>PHYSICAL STATE</b>	Liquid
<b>BUFFER</b>	Tris-buffered Saline containing 0.1% BSA and 0.09% Sodium Azide
<b>ISOTYPE</b>	IgG
<b>ORIGIN</b>	USA
<b>PRODUCTION PROCEDURES</b>	Antibody was affinity purified using an epitope specific to DDX24 immobilized on solid support.  The epitope recognized by IHC-00152 maps to a region between residues 800 and the C-terminus (residue 859) of human DEAD (Asp-Glu-Ala-Asp) box polypeptide 24 using the numbering given in entry NP_065147.1 (GeneID 57062).
<b>APPLICATIONS</b>	Centrifuge tube to remove product from lid. Optimal working dilutions should be determined experimentally by the investigator. Prepare working dilution immediately before use.  Immunohistochemistry 1:100 – 1:500
<b>APPLICATION NOTES</b>	Epitope exposure is recommended.  Epitope exposure with citrate buffer will enhance staining.  Likely to work with frozen sections.
<b>IHC HUMAN CONTROLS</b>	In some cases, the antibody may be diluted further than indicated. Metastatic Lymph Node, Ovarian Carcinoma, Prostate Carcinoma
<b>ADDITIONAL INFO</b>	<a href="https://www.bethyl.com/product/IHC-00152">https://www.bethyl.com/product/IHC-00152</a> Use the link above to view SDS, a current list of citations, and other product specific information.

This document certifies that this product has met all of the quality control standards defined by Bethyl Laboratories, Inc.  
Eric McIntush, PhD | Chief Scientific Officer Date: June 21, 2019



**Detection of human DDX24 by immunohistochemistry.**  
*Sample:* FFPE section of human ovarian tumor. *Antibody:* Affinity purified rabbit anti-DDX24 (Cat. No. IHC-00152) used at a dilution of 1:250. *Detection:* DAB



**Detection of human DDX24 by immunohistochemistry.**  
*Sample:* FFPE section of human prostate adenocarcinoma. *Antibody:* Affinity purified rabbit anti-DDX24 (Cat. No. IHC-00152) used at a dilution of 1:250. *Detection:* DAB