

MED1 IHC Antibody

Rabbit Polyclonal

Antigen Affinity Purified

Protein ID NP_004765.2

Catalog No. IHC-00149

GeneID 5469

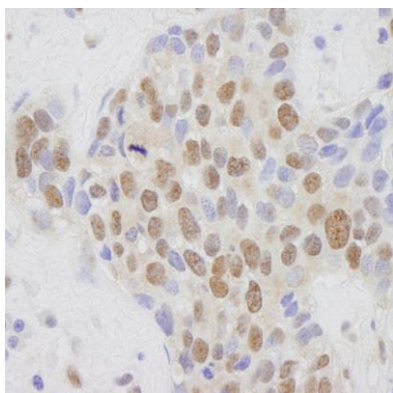
Lot No. IHC-00149-1



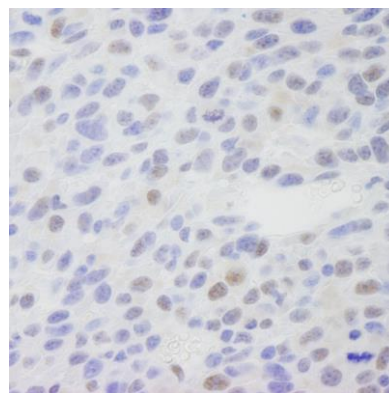
| | |
|------------------------------|--|
| APPLICATIONS | IHC |
| SPECIES REACTIVITY | Human, Mouse |
| PRESUMED REACTIVITY | Based on 100% sequence identity, this antibody is predicted to react with Rat, Chicken, Turkey, Bovine, Dog, Horse, Rabbit, Guinea pig_10141, Pig, Panda, Orangutan, Monkey, Gorilla and Chimpanzee |
| AMOUNT | 100 µl |
| CONCENTRATION | 250 µg/ml |
| STORAGE/SHELF LIFE | 2 – 8° C / 1 year from date of receipt |
| PHYSICAL STATE | Liquid |
| BUFFER | Tris-buffered Saline containing 0.1% BSA and 0.09% Sodium Azide |
| ISOTYPE | IgG |
| ORIGIN | USA |
| PRODUCTION PROCEDURES | Antibody was affinity purified using an epitope specific to MED1 immobilized on solid support. The epitope recognized by IHC-00149 maps to a region between residues 1525 and the C-terminus (residue 1581) of human Mediator complex subunit 1 using the numbering given in entry NP_004765.2 (GeneID 5469). |
| APPLICATIONS | Centrifuge tube to remove product from lid. Optimal working dilutions should be determined experimentally by the investigator. Prepare working dilution immediately before use. Immunohistochemistry 1:100 – 1:500 |
| APPLICATION NOTES | Epitope exposure is recommended. Epitope exposure with citrate buffer will enhance staining. Likely to work with frozen sections. |
| IHC HUMAN CONTROLS | In some cases, the antibody may be diluted further than indicated. Breast Carcinoma, Linitis Plastica Stomach Cancer, Metastatic Lymph Node, Ovarian Carcinoma, Pancreatic Islet Cell Tumor, Skin Basal Cell Carcinoma, Stomach Adenocarcinoma, Testicular Seminoma |
| IHC MOUSE CONTROLS | Squamous Cell Carcinoma |
| ADDITIONAL INFO | https://www.bethyl.com/product/IHC-00149 Use the link above to view SDS, a current list of citations, and other product specific information. |

This document certifies that this product has met all of the quality control standards defined by Bethyl Laboratories, Inc.
Eric McIntush, PhD | Chief Scientific Officer

Date: June 21, 2019



Detection of human MED1 by immunohistochemistry.
Sample: FFPE section of human breast tumor. *Antibody:* Affinity purified rabbit anti-MED1 (Cat. No. IHC-00149) used at a dilution of 1:250. *Detection:* DAB



Detection of mouse MED1 by immunohistochemistry.
Sample: FFPE section of mouse squamous cell carcinoma. *Antibody:* Affinity purified rabbit anti-MED1 (Cat. No. IHC-00149) used at a dilution of 1:250. *Detection:* DAB