

# CRABP2 IHC Antibody

Rabbit Polyclonal

Antigen Affinity Purified

Protein ID NP\_001869.1

Catalog No. IHC-00147

GeneID 1382

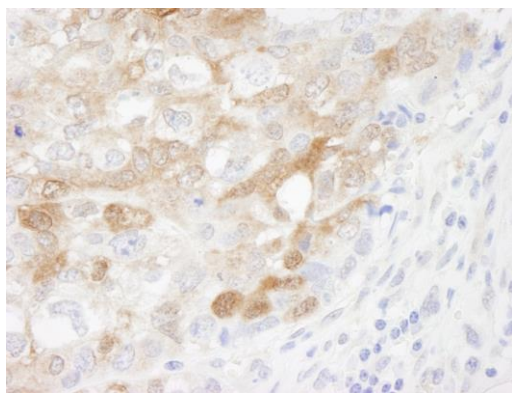
Lot No. IHC-00147-1



<b>APPLICATIONS</b>	IHC
<b>SPECIES REACTIVITY</b>	Human
<b>PRESUMED REACTIVITY</b>	Based on 100% sequence identity, this antibody is predicted to react with Guinea pig_10141, Orangutan, Monkey, Gorilla, Chimpanzee, Northern white-cheeked gibbon, African elephant and Crab-eating macaque
<b>AMOUNT</b>	100 µl
<b>CONCENTRATION</b>	100 µg/ml
<b>STORAGE/SHELF LIFE</b>	2 – 8° C / 1 year from date of receipt
<b>PHYSICAL STATE</b>	Liquid
<b>BUFFER</b>	Tris-buffered Saline containing 0.1% BSA and 0.09% Sodium Azide
<b>ISOTYPE</b>	IgG
<b>ORIGIN</b>	USA
<b>PRODUCTION PROCEDURES</b>	Antibody was affinity purified using an epitope specific to CRABP2 immobilized on solid support.  The epitope recognized by IHC-00147 maps to a region between residues 80 and the C-terminus (residue 138) of human Cellular Retinoic Acid Binding Protein 2 using the numbering given in entry NP_001869.1 (GeneID 1382 ).
<b>APPLICATIONS</b>	Centrifuge tube to remove product from lid. Optimal working dilutions should be determined experimentally by the investigator. Prepare working dilution immediately before use.  Immunohistochemistry 1:100 – 1:500
<b>APPLICATION NOTES</b>	Epitope exposure is recommended.  Epitope exposure with citrate buffer will enhance staining.  Likely to work with frozen sections.
<b>IHC HUMAN CONTROLS</b>	In some cases, the antibody may be diluted further than indicated. Breast Carcinoma, Ovarian Carcinoma, Stomach Adenocarcinoma
<b>ADDITIONAL INFO</b>	<a href="https://www.bethyl.com/product/IHC-00147">https://www.bethyl.com/product/IHC-00147</a> Use the link above to view SDS, a current list of citations, and other product specific information.

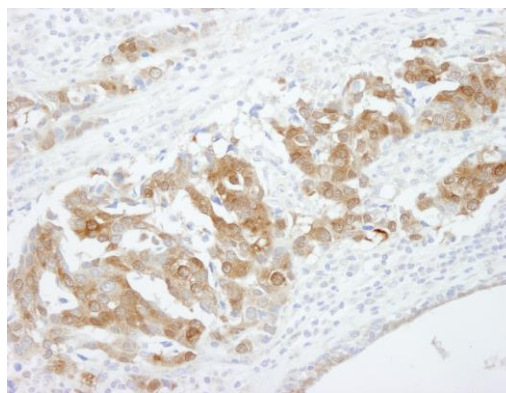
This document certifies that this product has met all of the quality control standards defined by Bethyl Laboratories, Inc.  
Eric McIntush, PhD | Chief Scientific Officer

Date: June 21, 2019

**Detection of human CRABP2 by immunohistochemistry.**

*Sample:* FFPE section of human breast adenocarcinoma.

*Antibody:* Affinity purified rabbit anti-CRABP2 (Cat. No. IHC-00147) used at a dilution of 1:500. *Detection:* DAB

**Detection of human CRABP2 by immunohistochemistry.**

*Sample:* FFPE section of human breast adenocarcinoma.

*Antibody:* Affinity purified rabbit anti-CRABP2 (Cat. No. IHC-00147) used at a dilution of 1:100. *Detection:* DAB