

SAFB1 IHC Antibody

Rabbit Polyclonal

Antigen Affinity Purified

Protein ID NP_002958.2

Catalog No. IHC-00142

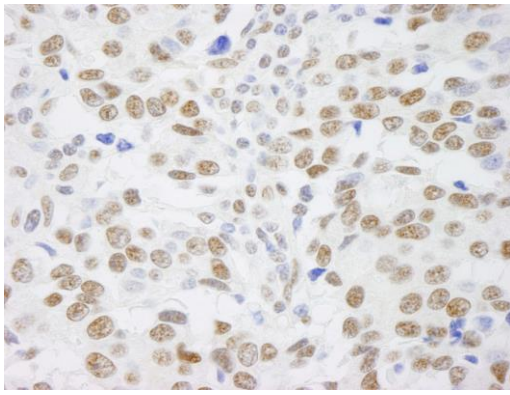
GeneID 6294

Lot No. IHC-00142-1

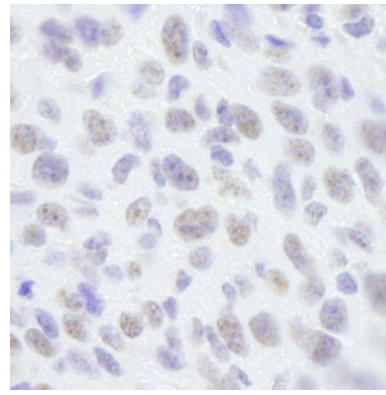


APPLICATIONS	IHC
SPECIES REACTIVITY	Human, Mouse
PRESUMED REACTIVITY	Based on 100% sequence identity, this antibody is predicted to react with Rabbit, Orangutan, Monkey, Gorilla, Chimpanzee, thirteen-lined ground squirrel, Chinese hamster and Crab-eating macaque
AMOUNT	100 µl
CONCENTRATION	250 µg/ml
STORAGE/SHELF LIFE	2 - 8° C / 1 year from date of receipt
PHYSICAL STATE	Liquid
BUFFER	Tris-buffered Saline containing 0.1% BSA and 0.09% Sodium Azide
ISOTYPE	IgG
ORIGIN	USA
PRODUCTION PROCEDURES	Antibody was affinity purified using an epitope specific to SAFB1 immobilized on solid support. The epitope recognized by IHC-00142 maps to a region between residues 875 and the C-terminus (residue 915) of human Scaffold Attachment Factor B using the numbering given in entry NP_002958.2 (GeneID 6294).
APPLICATIONS	Centrifuge tube to remove product from lid. Optimal working dilutions should be determined experimentally by the investigator. Prepare working dilution immediately before use. Immunohistochemistry 1:100 - 1:500
APPLICATION NOTES	Epitope exposure is recommended. Epitope exposure with citrate buffer will enhance staining. Likely to work with frozen sections.
IHC HUMAN CONTROLS	In some cases, the antibody may be diluted further than indicated. Breast Carcinoma, Colon Carcinoma, Metastatic Lymph Node, Ovarian Carcinoma, Pancreatic Islet Cell Tumor, Prostate Carcinoma, Skin Basal Cell Carcinoma, Stomach Adenocarcinoma, Testicular Seminoma
IHC MOUSE CONTROLS	Squamous Cell Carcinoma
ADDITIONAL INFO	https://www.bethyl.com/product/IHC-00142 Use the link above to view SDS, a current list of citations, and other product specific information.

This document certifies that this product has met all of the quality control standards defined by Bethyl Laboratories, Inc.
Eric McIntush, PhD | Chief Scientific Officer Date: June 21, 2019



Detection of human SAFB1 by immunohistochemistry.
Sample: FFPE section of human breast adenocarcinoma.
Antibody: Affinity purified rabbit anti-SAFB1 (Cat. No. IHC-00142) used at a dilution of 1:250. *Detection:* DAB



Detection of mouse SAFB1 by immunohistochemistry.
Sample: FFPE section of mouse squamous cell carcinoma.
Antibody: Affinity purified rabbit anti-SAFB1 (Cat. No. IHC-00142) used at a dilution of 1:250. *Detection:* DAB