

SMAR1 /BANP IHC Antibody

Rabbit Polyclonal

Antigen Affinity Purified

Protein ID Q96GJ7

Catalog No. IHC-00140

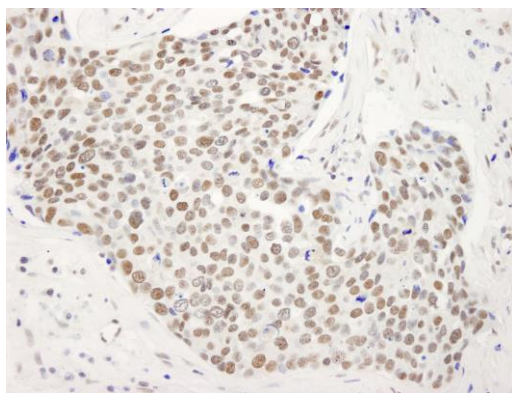
GeneID 54971

Lot No. IHC-00140-1

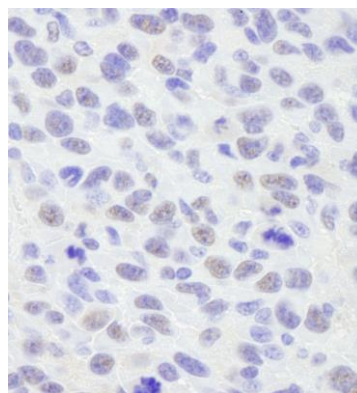


APPLICATIONS	IHC
SPECIES REACTIVITY	Human, Mouse
PRESUMED REACTIVITY	Based on 100% sequence identity, this antibody is predicted to react with Rat, Bovine, Dog, Horse, Rabbit, Guinea pig_10141, Panda, Orangutan, Monkey, Chimpanzee, Chinese hamster and Little brown bat
AMOUNT	100 µl
CONCENTRATION	50 µg/ml
STORAGE/SHELF LIFE	2 - 8° C / 1 year from date of receipt
PHYSICAL STATE	Liquid
BUFFER	Tris-buffered Saline containing 0.1% BSA and 0.09% Sodium Azide
ISOTYPE	IgG
ORIGIN	USA
PRODUCTION PROCEDURES	Antibody was affinity purified using an epitope specific to SMAR1 /BANP immobilized on solid support. The epitope recognized by IHC-00140 maps to a region between residues 425 and the C-terminus (residue 469) of human BTG3 associated nuclear protein using the numbering given in TrEMBL entry Q96GJ7 (GeneID 54971).
APPLICATIONS	Centrifuge tube to remove product from lid. Optimal working dilutions should be determined experimentally by the investigator. Prepare working dilution immediately before use. Immunohistochemistry 1:100 - 1:500
APPLICATION NOTES	Epitope exposure is recommended. Epitope exposure with citrate buffer will enhance staining. Likely to work with frozen sections.
IHC HUMAN CONTROLS	In some cases, the antibody may be diluted further than indicated. Breast Carcinoma, Laryngeal Squamous Cell Carcinoma, Metastatic Lymph Node, Ovarian Carcinoma, Prostate Carcinoma, Skin Basal Cell Carcinoma, Stomach Adenocarcinoma, Testicular Seminoma
IHC MOUSE CONTROLS	Squamous Cell Carcinoma
ADDITIONAL INFO	https://www.bethyl.com/product/IHC-00140 Use the link above to view SDS, a current list of citations, and other product specific information.

This document certifies that this product has met all of the quality control standards defined by Bethyl Laboratories, Inc.
Eric McIntush, PhD | Chief Scientific Officer Date: June 21, 2019



Detection of human SMAR1/BANP by immunohistochemistry. *Sample:* FFPE section of human breast tumor. *Antibody:* Affinity purified rabbit anti-SMAR1/BANP (Cat. No. IHC-00140) used at a dilution of 1:250. *Detection:* DAB



Detection of mouse SMAR1/BANP by immunohistochemistry. *Sample:* FFPE section of mouse squamous cell carcinoma. *Antibody:* Affinity purified rabbit anti-SMAR1/BANP (Cat. No. IHC-00140) used at a dilution of 1:250. *Detection:* DAB