

CTBP1 IHC Antibody

Rabbit Polyclonal

Antigen Affinity Purified

Protein ID Q13363

Catalog No. IHC-00137

GeneID 1487

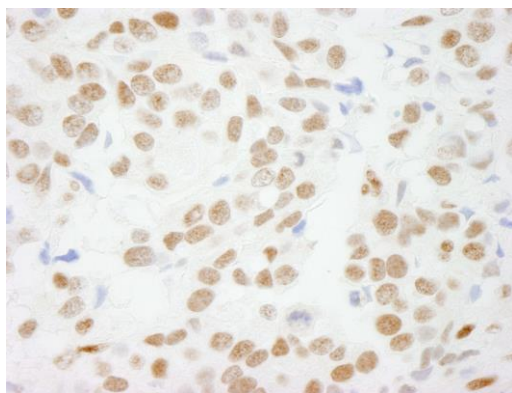
Lot No. IHC-00137-1



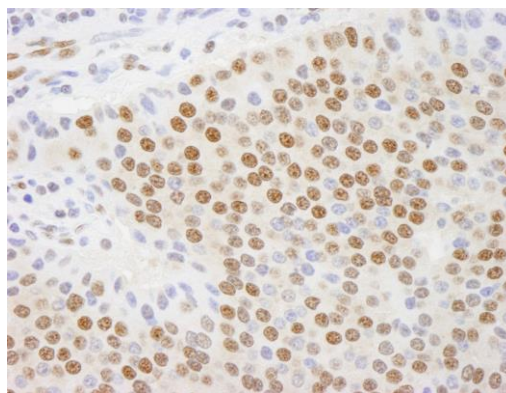
APPLICATIONS	IHC
SPECIES REACTIVITY	Human
PRESUMED REACTIVITY	Based on 100% sequence identity, this antibody is predicted to react with Panda, Orangutan, Monkey, Gorilla, Chimpanzee, Northern white-cheeked gibbon, Small-eared galago and Naked mole rat
AMOUNT	100 µl
CONCENTRATION	100 µg/ml
STORAGE/SHELF LIFE	2 – 8° C / 1 year from date of receipt
PHYSICAL STATE	Liquid
BUFFER	Tris-buffered Saline containing 0.1% BSA and 0.09% Sodium Azide
ISOTYPE	IgG
ORIGIN	USA
PRODUCTION PROCEDURES	Antibody was affinity purified using an epitope specific to CTBP1 immobilized on solid support. The epitope recognized by IHC-00137 maps to a region between residues 400 and the C-terminus (residue 440) of human C-terminal Binding Protein 1 using the numbering given in Swiss-Prot entry Q13363 (GeneID 1487).
APPLICATIONS	Centrifuge tube to remove product from lid. Optimal working dilutions should be determined experimentally by the investigator. Prepare working dilution immediately before use. Immunohistochemistry 1:100 – 1:500
APPLICATION NOTES	Epitope exposure is recommended. Epitope exposure with citrate buffer will enhance staining. Likely to work with frozen sections.
IHC HUMAN CONTROLS	In some cases, the antibody may be diluted further than indicated. Breast Carcinoma, Colon Carcinoma, Metastatic Lymph Node, Ovarian Carcinoma, Prostate Carcinoma, Skin Basal Cell Carcinoma, Stomach Adenocarcinoma
ADDITIONAL INFO	https://www.bethyl.com/product/IHC-00137 Use the link above to view SDS, a current list of citations, and other product specific information.

This document certifies that this product has met all of the quality control standards defined by Bethyl Laboratories, Inc.
Eric McIntush, PhD | Chief Scientific Officer

Date: June 21, 2019



Detection of human CTBP1 by immunohistochemistry.
Sample: FFPE section of human breast adenocarcinoma.
Antibody: Affinity purified rabbit anti-CTBP1 (Cat. No. IHC-00137) used at a dilution of 1:100. *Detection:* DAB



Detection of human CTBP1 by immunohistochemistry.
Sample: FFPE section of human islet cell tumor. *Antibody:* Affinity purified rabbit anti-CTBP1 (Cat. No. IHC-00137) used at a dilution of 1:100. *Detection:* DAB