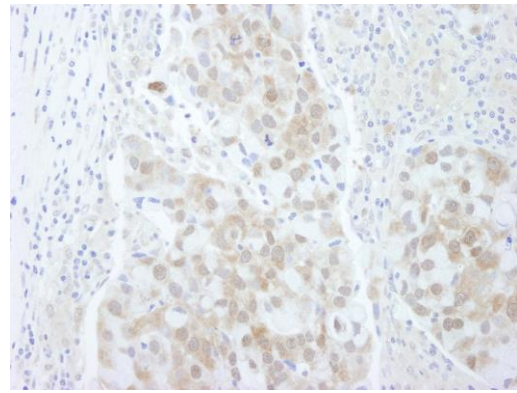
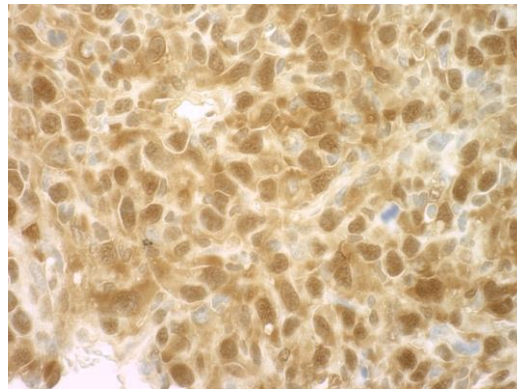


Detection of human 4EBP1 by immunohistochemistry.
Sample: FFPE section of human colon carcinoma. *Antibody:* Affinity purified rabbit anti-4EBP1 (Cat. No. IHC-00133) used at a dilution of 1:250. *Detection:* DAB



Detection of human 4EBP1 by immunohistochemistry.
Sample: FFPE section of human breast carcinoma. *Antibody:* Affinity purified rabbit anti-4EBP1 (Cat. No. IHC-00133) used at a dilution of 1:250. *Detection:* DAB



Detection of mouse 4EBP1 by immunohistochemistry.
Sample: FFPE section of mouse squamous cell carcinoma. *Antibody:* Affinity purified rabbit anti-4EBP1 (Cat. No. IHC-00133) used at a dilution of 1:50. *Detection:* DAB