

# DDX1 IHC Antibody

Rabbit Polyclonal

Antigen Affinity Purified

Protein ID AAH12739.1

Catalog No. IHC-00132

GeneID 1653

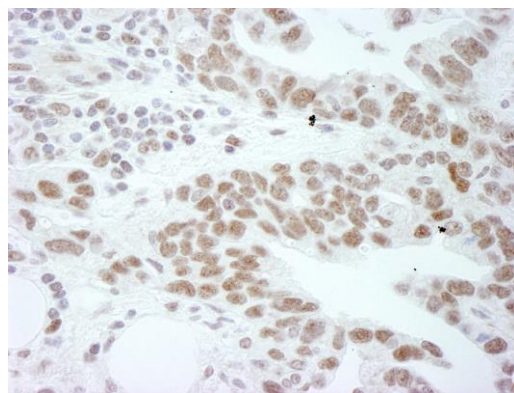
Lot No. IHC-00132-1



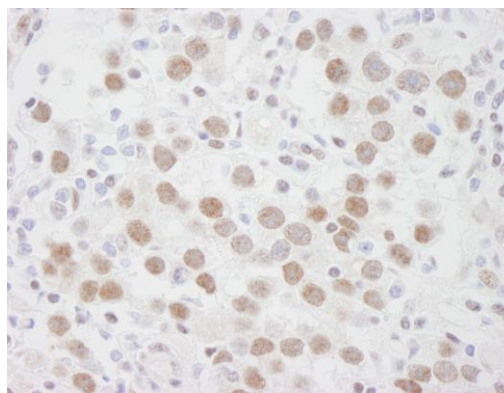
<b>APPLICATIONS</b>	IHC
<b>SPECIES REACTIVITY</b>	Human
<b>PRESUMED REACTIVITY</b>	Based on 100% sequence identity, this antibody is predicted to react with Mouse, Rat, Bovine, Dog, Horse, Rabbit, Guinea pig_10141, Pig, Panda, Orangutan, Monkey, Gorilla and Chimpanzee
<b>AMOUNT</b>	100 µl
<b>CONCENTRATION</b>	250 µg/ml
<b>STORAGE/SHELF LIFE</b>	2 – 8° C / 1 year from date of receipt
<b>PHYSICAL STATE</b>	Liquid
<b>BUFFER</b>	Tris-buffered Saline containing 0.1% BSA and 0.09% Sodium Azide
<b>ISOTYPE</b>	IgG
<b>ORIGIN</b>	USA
<b>PRODUCTION PROCEDURES</b>	Antibody was affinity purified using an epitope specific to DDX1 immobilized on solid support.  The epitope recognized by IHC-00132 maps to a region between residues 500 and 550 of human DEAD (Asp-Glu-Ala-Asp) Box Polypeptide 1 using the numbering given in entry AAH12739.1 (GeneID 1653).
<b>APPLICATIONS</b>	Centrifuge tube to remove product from lid. Optimal working dilutions should be determined experimentally by the investigator. Prepare working dilution immediately before use.  Immunohistochemistry 1:100 – 1:500
<b>APPLICATION NOTES</b>	Epitope exposure is recommended.  Epitope exposure with citrate buffer will enhance staining.  Likely to work with frozen sections.
<b>IHC HUMAN CONTROLS</b>	In some cases, the antibody may be diluted further than indicated. Breast Carcinoma, Metastatic Lymph Node, Ovarian Carcinoma, Pancreatic Islet Cell Tumor, Skin Basal Cell Carcinoma, Stomach Adenocarcinoma, Testicular Seminoma
<b>ADDITIONAL INFO</b>	<a href="https://www.bethyl.com/product/IHC-00132">https://www.bethyl.com/product/IHC-00132</a> Use the link above to view SDS, a current list of citations, and other product specific information.

This document certifies that this product has met all of the quality control standards defined by Bethyl Laboratories, Inc.  
Eric McIntush, PhD | Chief Scientific Officer

Date: June 21, 2019



**Detection of human DDX1 by immunohistochemistry.**  
*Sample:* FFPE section of human ovarian tumor. *Antibody:* Affinity purified rabbit anti-DDX1 (Cat. No. IHC-00132) used at a dilution of 1:250. *Detection:* DAB



**Detection of human DDX1 by immunohistochemistry.**  
*Sample:* FFPE section of human seminoma. *Antibody:* Affinity purified rabbit anti-DDX1 (Cat. No. IHC-00132) used at a dilution of 1:250. *Detection:* DAB