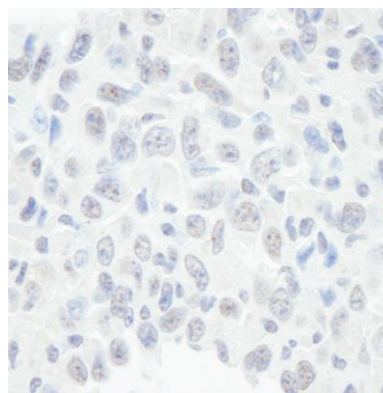


Detection of human BAF57/SMARCE1 by immunohistochemistry. *Sample:* FFPE section of human ovarian tumor. *Antibody:* Affinity purified rabbit anti-BAF57/SMARCE1 (Cat. No. IHC-00129) used at a dilution of 1:250. *Detection:* DAB



Detection of mouse BAF57/SMARCE1 by immunohistochemistry. *Sample:* FFPE section of mouse squamous cell carcinoma. *Antibody:* Affinity purified rabbit anti-BAF57/SMARCE1 (Cat. No. IHC-00129) used at a dilution of 1:250. *Detection:* DAB