

BIRC6/Apollon IHC Antibody

Rabbit Polyclonal

Antigen Affinity Purified

Protein ID Q9NR09

Catalog No. IHC-00124

GeneID 57448

Lot No. IHC-00124-1



APPLICATIONS	IHC
SPECIES REACTIVITY	Human
PRESUMED REACTIVITY	Based on 100% sequence identity, this antibody is predicted to react with Orangutan, Monkey, Chimpanzee, Crab-eating macaque and White-tufted-ear marmoset
AMOUNT	100 µl
CONCENTRATION	50 µg/ml
STORAGE/SHELF LIFE	2 – 8° C / 1 year from date of receipt
PHYSICAL STATE	Liquid
BUFFER	Tris-buffered Saline containing 0.1% BSA and 0.09% Sodium Azide
ISOTYPE	IgG
ORIGIN	USA
PRODUCTION PROCEDURES	Antibody was affinity purified using an epitope specific to BIRC6/Apollon immobilized on solid support.

The epitope recognized by IHC-00124 maps to a region between residues 4775 and the C-terminus (residue 4829) of human Baculoviral IAP repeat-containing protein 6 using the numbering given in Swiss-Prot entry Q9NR09 (GeneID 57448).

APPLICATIONS Centrifuge tube to remove product from lid. Optimal working dilutions should be determined experimentally by the investigator. Prepare working dilution immediately before use.

Immunohistochemistry 1:100 – 1:500

APPLICATION NOTES Epitope exposure is recommended.

Epitope exposure with citrate buffer will enhance staining.

Likely to work with frozen sections.

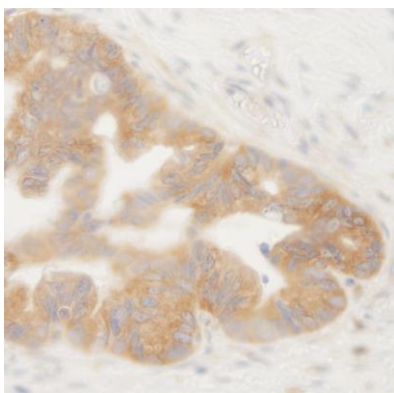
In some cases, the antibody may be diluted further than indicated.

IHC HUMAN CONTROLS Breast Carcinoma, Colon Carcinoma, Laryngeal Squamous Cell Carcinoma, Metastatic Lymph Node, Ovarian Carcinoma, Prostate Carcinoma, Skin Basal Cell Carcinoma, Stomach Adenocarcinoma, Testicular Seminoma

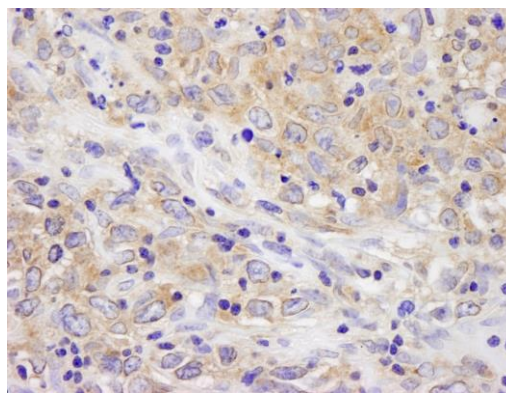
ADDITIONAL INFO <https://www.bethyl.com/product/IHC-00124>

Use the link above to view SDS, a current list of citations, and other product specific information.

This document certifies that this product has met all of the quality control standards defined by Bethyl Laboratories, Inc.
Eric McIntush, PhD | Chief Scientific Officer Date: June 21, 2019



Detection of human BIRC6/Apollon by immunohistochemistry. *Sample:* FFPE section of human ovarian tumor. *Antibody:* Affinity purified rabbit anti-BIRC6/Apollon (Cat. No. IHC-00124) used at a dilution of 1:250. *Detection:* DAB



Detection of human BIRC6/Apollon by immunohistochemistry. *Sample:* FFPE section of human metastatic lymph node. *Antibody:* Affinity purified rabbit anti-BIRC6/Apollon (Cat. No. IHC-00124) used at a dilution of 1:250. *Detection:* DAB