

Bub3 IHC Antibody

Rabbit Polyclonal

Antigen Affinity Purified

Protein ID O43684

Catalog No. IHC-00123

GeneID 9184

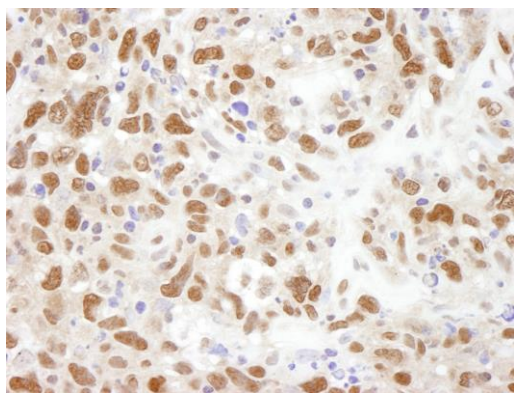
Lot No. IHC-00123-1



APPLICATIONS	IHC
SPECIES REACTIVITY	Human
PRESUMED REACTIVITY	Based on 100% sequence identity, this antibody is predicted to react with Mouse, Rat, Bovine, Dog, Horse, Rabbit, Guinea pig_10141, Pig, Panda, Orangutan, Monkey, Gorilla and White-tufted-ear marmoset
AMOUNT	100 µl
CONCENTRATION	250 µg/ml
STORAGE/SHELF LIFE	2 – 8° C / 1 year from date of receipt
PHYSICAL STATE	Liquid
BUFFER	Tris-buffered Saline containing 0.1% BSA and 0.09% Sodium Azide
ISOTYPE	IgG
ORIGIN	USA
PRODUCTION PROCEDURES	Antibody was affinity purified using an epitope specific to Bub3 immobilized on solid support. The epitope recognized by IHC-00123 maps to a region between residues 275 and 325 of human Bub3 using the numbering given in Swiss-Prot entry O43684 (GeneID 9184).
APPLICATIONS	Centrifuge tube to remove product from lid. Optimal working dilutions should be determined experimentally by the investigator. Prepare working dilution immediately before use. Immunohistochemistry 1:100 – 1:500
APPLICATION NOTES	Epitope exposure is recommended. Epitope exposure with citrate buffer will enhance staining. Likely to work with frozen sections.
IHC HUMAN CONTROLS	In some cases, the antibody may be diluted further than indicated. B-cell Lymphoma, Breast Carcinoma, Colon Carcinoma, Laryngeal Squamous Cell Carcinoma, Linitis Plastica Stomach Cancer, Metastatic Lymph Node, Ovarian Carcinoma, Pancreatic Islet Cell Tumor, Prostate Carcinoma, Skin Basal Cell Carcinoma, Small Cell Lung Cancer, Stomach Adenocarcinoma, Testicular Seminoma
ADDITIONAL INFO	https://www.bethyl.com/product/IHC-00123 Use the link above to view SDS, a current list of citations, and other product specific information.

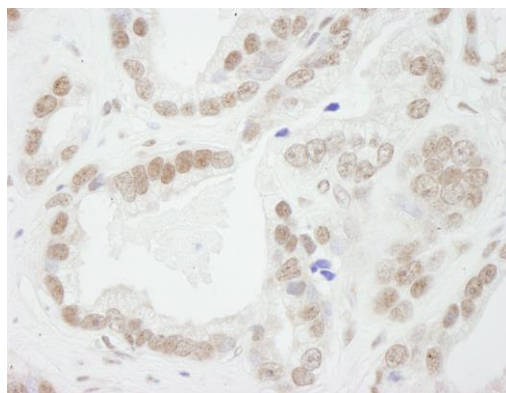
This document certifies that this product has met all of the quality control standards defined by Bethyl Laboratories, Inc.
Eric McIntush, PhD | Chief Scientific Officer

Date: June 21, 2019

**Detection of human BUB3 by immunohistochemistry.**

Sample: FFPE section of human metastatic lymph node.

Antibody: Affinity purified rabbit anti-BUB3 (Cat. No. IHC-00123) used at a dilution of 1:250. *Detection:* DAB

**Detection of human BUB3 by immunohistochemistry.**

Sample: FFPE section of human prostate adenocarcinoma.

Antibody: Affinity purified rabbit anti-BUB3 (Cat. No. IHC-00123) used at a dilution of 1:250. *Detection:* DAB