

BHC110/LSD1 IHC Antibody

Rabbit Polyclonal

Antigen Affinity Purified

Protein ID O60341

Catalog No. IHC-00122

GeneID 23028

Lot No. IHC-00122-1



APPLICATIONS	IHC
SPECIES REACTIVITY	Human
PRESUMED REACTIVITY	Based on 100% sequence identity, this antibody is predicted to react with Orangutan and Gorilla
AMOUNT	100 µl
CONCENTRATION	250 µg/ml
STORAGE/SHELF LIFE	2 – 8° C / 1 year from date of receipt
PHYSICAL STATE	Liquid
BUFFER	Tris-buffered Saline containing 0.1% BSA and 0.09% Sodium Azide
ISOTYPE	IgG
ORIGIN	USA
PRODUCTION PROCEDURES	Antibody was affinity purified using an epitope specific to BHC110/LSD1 immobilized on solid support.

The epitope recognized by IHC-00122 maps to a region between residues 50 and 100 of human FAD-binding protein BRAF35-HDAC complex 110 kDa (lysine-specific histone demethylase 1) using the numbering given in entry BAA25527.1 (GeneID 23028).

APPLICATIONS Centrifuge tube to remove product from lid. Optimal working dilutions should be determined experimentally by the investigator. Prepare working dilution immediately before use.

Immunohistochemistry 1:100 – 1:500

APPLICATION NOTES Epitope exposure is recommended.

Epitope exposure with citrate buffer will enhance staining.

Likely to work with frozen sections.

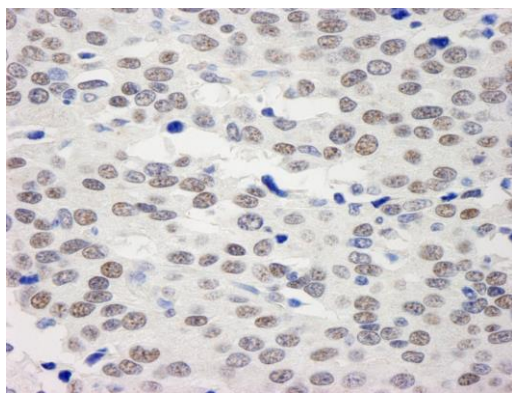
In some cases, the antibody may be diluted further than indicated.

IHC HUMAN CONTROLS B-cell Lymphoma, Breast Carcinoma, Colon Carcinoma, Laryngeal Squamous Cell Carcinoma, Linitis Plastica Stomach Cancer, Non-Small Cell Lung Cancer, Ovarian Carcinoma, Pancreatic Islet Cell Tumor, Prostate Carcinoma, Small Cell Lung Cancer, Stomach Adenocarcinoma, Testicular Seminoma

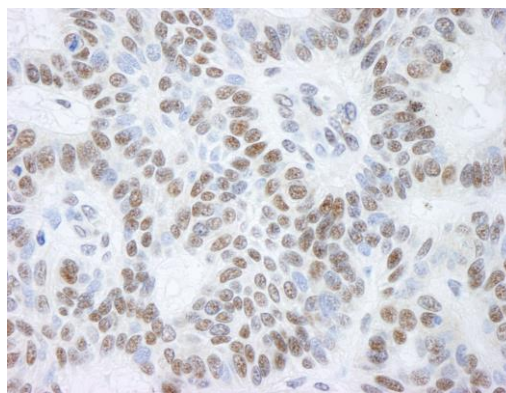
ADDITIONAL INFO <https://www.bethyl.com/product/IHC-00122>

Use the link above to view SDS, a current list of citations, and other product specific information.

This document certifies that this product has met all of the quality control standards defined by Bethyl Laboratories, Inc.
Eric McIntush, PhD | Chief Scientific Officer Date: June 21, 2019



Detection of human BHC110/LSD1 by immunohistochemistry. *Sample:* FFPE section of human breast adenocarcinoma. *Antibody:* Affinity purified rabbit anti-BHC110/LSD1 (Cat. No. IHC-00122) used at a dilution of 1:250. *Detection:* DAB.



Detection of human BHC110/LSD1 by immunohistochemistry. *Sample:* FFPE section of human skin basal cell carcinoma. *Antibody:* Affinity purified rabbit anti-BHC110/LSD1 (Cat. No. IHC-00122) used at a dilution of 1:250. *Detection:* DAB