

BID IHC Antibody

Rabbit Polyclonal

Antigen Affinity Purified

Protein ID NP_932070.1

Catalog No. IHC-00121

GeneID 637

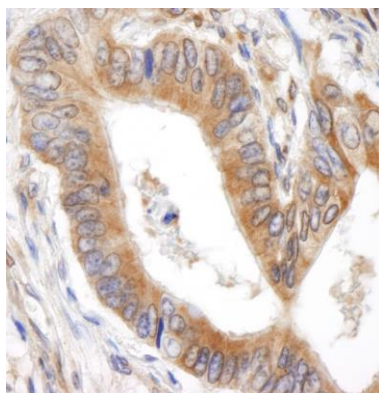
Lot No. IHC-00121-1



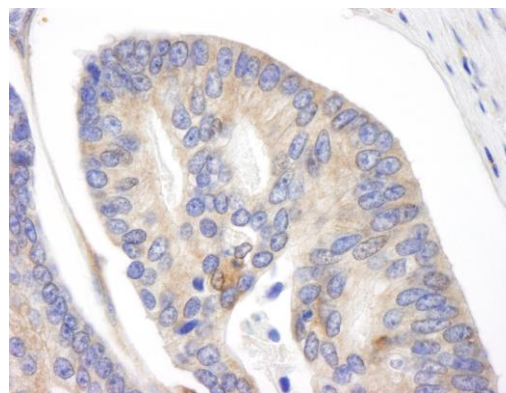
| | |
|------------------------------|--|
| APPLICATIONS | IHC |
| SPECIES REACTIVITY | Human |
| PRESUMED REACTIVITY | Based on 100% sequence identity, this antibody is predicted to react with Gorilla, Chimpanzee and Northern white-cheeked gibbon |
| AMOUNT | 100 µl |
| CONCENTRATION | 250 µg/ml |
| STORAGE/SHELF LIFE | 2 – 8° C / 1 year from date of receipt |
| PHYSICAL STATE | Liquid |
| BUFFER | Tris-buffered Saline containing 0.1% BSA and 0.09% Sodium Azide |
| ISOTYPE | IgG |
| ORIGIN | USA |
| PRODUCTION PROCEDURES | Antibody was affinity purified using an epitope specific to BID immobilized on solid support. The epitope recognized by IHC-00121 maps to a region between residues 60 and 120 of human BH3 interacting domain death agonist using the number given in entry NP_932070.1 (GeneID 637). The epitope is found in isoforms 1 and 2 (but not isoform 3) of human BID. |
| APPLICATIONS | Centrifuge tube to remove product from lid. Optimal working dilutions should be determined experimentally by the investigator. Prepare working dilution immediately before use. Immunohistochemistry 1:100 – 1:500 |
| APPLICATION NOTES | Epitope exposure is recommended. Epitope exposure with citrate buffer will enhance staining. Likely to work with frozen sections. In some cases, the antibody may be diluted further than indicated. |
| ADDITIONAL INFO | https://www.bethyl.com/product/IHC-00121 Use the link above to view SDS, a current list of citations, and other product specific information. |

This document certifies that this product has met all of the quality control standards defined by Bethyl Laboratories, Inc.
Eric McIntush, PhD | Chief Scientific Officer

Date: June 21, 2019



Detection of human BID by immunohistochemistry.
Sample: FFPE section of human colon adenocarcinoma.
Antibody: Affinity purified rabbit anti-BID (Cat. No. IHC-00121) used at a dilution of 1:250. *Detection:* DAB



Detection of human BID by immunohistochemistry.
Sample: FFPE section of human prostate adenocarcinoma.
Antibody: Affinity purified rabbit anti-BID (Cat. No. IHC-00121) used at a dilution of 1:250. *Detection:* DAB