

# ADNP IHC Antibody

Rabbit Polyclonal

Antigen Affinity Purified

Protein ID NP\_056154.1

Catalog No. IHC-00118

GeneID 23394

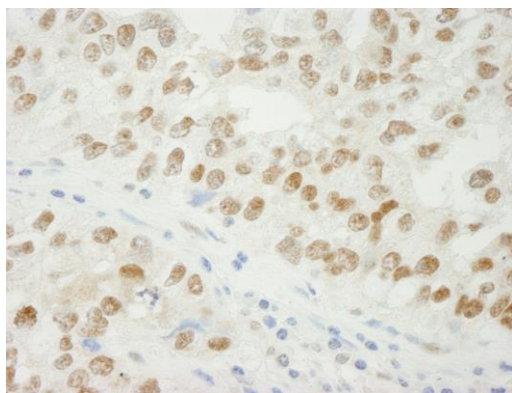
Lot No. IHC-00118-1



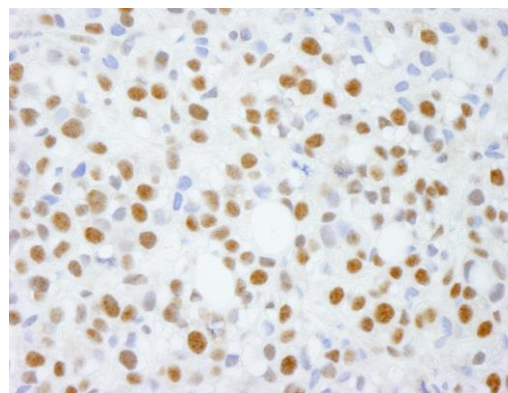
<b>APPLICATIONS</b>	IHC
<b>SPECIES REACTIVITY</b>	Human
<b>PRESUMED REACTIVITY</b>	Based on 100% sequence identity, this antibody is predicted to react with Orangutan, Monkey, Gorilla, Chimpanzee, Northern white-cheeked gibbon, Small-eared galago and Crab-eating macaque
<b>AMOUNT</b>	100 µl
<b>CONCENTRATION</b>	250 µg/ml
<b>STORAGE/SHELF LIFE</b>	2 – 8° C / 1 year from date of receipt
<b>PHYSICAL STATE</b>	Liquid
<b>BUFFER</b>	Tris-buffered Saline containing 0.1% BSA and 0.09% Sodium Azide
<b>ISOTYPE</b>	IgG
<b>ORIGIN</b>	USA
<b>PRODUCTION PROCEDURES</b>	Antibody was affinity purified using an epitope specific to ADNP immobilized on solid support.  The epitope recognized by IHC-00118 maps to a region between residues 1050 and the C-terminus (residue 1102) of human Activity-Dependent Neuroprotective Protein using the numbering given in entry NP_056154.1 (GeneID 23394).
<b>APPLICATIONS</b>	Centrifuge tube to remove product from lid. Optimal working dilutions should be determined experimentally by the investigator. Prepare working dilution immediately before use.  Immunohistochemistry 1:100 – 1:500
<b>APPLICATION NOTES</b>	Epitope exposure is recommended.  Epitope exposure with citrate buffer will enhance staining.  Likely to work with frozen sections.
<b>IHC HUMAN CONTROLS</b>	In some cases, the antibody may be diluted further than indicated. Breast Carcinoma, Laryngeal Squamous Cell Carcinoma, Linitis Plastica Stomach Cancer, Metastatic Lymph Node, Ovarian Carcinoma, Pancreatic Islet Cell Tumor, Prostate Carcinoma, Skin Basal Cell Carcinoma, Skin Squamous Cell Carcinoma, Small Cell Lung Cancer, Stomach Adenocarcinoma, Testicular Seminoma
<b>ADDITIONAL INFO</b>	<a href="https://www.bethyl.com/product/IHC-00118">https://www.bethyl.com/product/IHC-00118</a> Use the link above to view SDS, a current list of citations, and other product specific information.

This document certifies that this product has met all of the quality control standards defined by Bethyl Laboratories, Inc.  
Eric McIntush, PhD | Chief Scientific Officer

Date: June 21, 2019



**Detection of human ADNP by immunohistochemistry.**  
*Sample:* FFPE section of human breast adenocarcinoma.  
*Antibody:* Affinity purified rabbit anti-ADNP (Cat. No. IHC-00118) used at a dilution of 1:250. *Detection:* DAB.



**Detection of human ADNP by immunohistochemistry.**  
*Sample:* FFPE section of human metastatic bone marrow.  
*Antibody:* Affinity purified rabbit anti-ADNP (Cat. No. IHC-00118) used at a dilution of 1:250. *Detection:* DAB