

Phospho XRCC1 (S518/T519/T523) IHC Antibody

Rabbit Polyclonal

Antigen Affinity Purified Protein ID P18887
Catalog No. IHC-00115 GeneID 7515
Lot No. IHC-00115-1



APPLICATIONS	IHC, IHC-IF
SPECIES REACTIVITY	Human, Mouse
PRESUMED REACTIVITY	Based on 100% sequence identity, this antibody is predicted to react with Gorilla and Chimpanzee
AMOUNT	100 µl
CONCENTRATION	50 µg/ml
STORAGE/SHELF LIFE	2 – 8° C / 1 year from date of receipt
PHYSICAL STATE	Liquid
BUFFER	Tris-buffered Saline containing 0.1% BSA and 0.09% Sodium Azide
ISOTYPE	IgG
ORIGIN	USA
PRODUCTION PROCEDURES	Antibody was affinity purified using an epitope specific to Phospho XRCC1 (S518/T519/T523) immobilized on solid support.

The epitope recognized by IHC-00115 maps to a region surrounding residues Ser 518, Thr 519 and Thr 523 of human X-ray Repair Complementing protein 1 using the numbering given in SwissProt entry P18887 (GeneID 7515).

APPLICATIONS Centrifuge tube to remove product from lid. Optimal working dilutions should be determined experimentally by the investigator. Prepare working dilution immediately before use.

Immunohistochemistry 1:100 – 1:500
Immunofluorescence 1:50 – 1:500 (IHC)

APPLICATION NOTES Epitope exposure is recommended.

Epitope exposure with citrate buffer will enhance staining.

Likely to work with frozen sections.

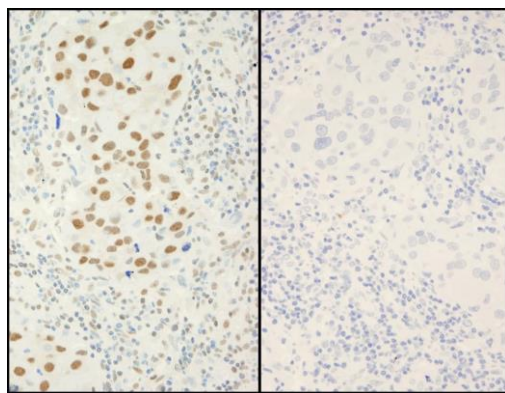
In some cases, the antibody may be diluted further than indicated.

IHC HUMAN CONTROLS B-cell Lymphoma, Breast Carcinoma, Colon Carcinoma, Laryngeal Squamous Cell Carcinoma, Linitis Plastica Stomach Cancer, Metastatic Lymph Node, Ovarian Carcinoma, Pancreatic Islet Cell Tumor, Prostate Carcinoma, Skin Basal Cell Carcinoma, Small Cell Lung Cancer, Stomach Adenocarcinoma, Testicular Seminoma

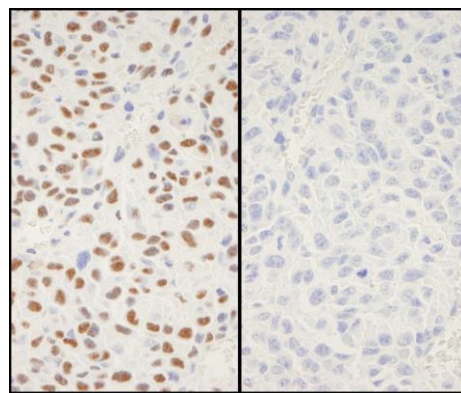
IHC MOUSE CONTROLS Colon Carcinoma CT26, Squamous Cell Carcinoma

ADDITIONAL INFO <https://www.bethyl.com/product/IHC-00115>
Use the link above to view SDS, a current list of citations, and other product specific information.

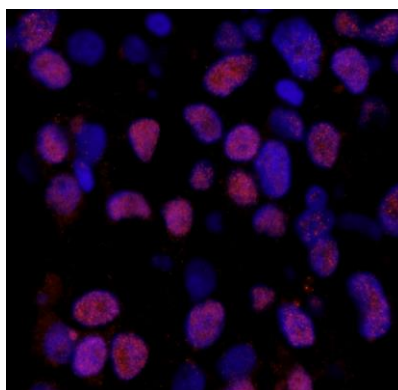
This document certifies that this product has met all of the quality control standards defined by Bethyl Laboratories, Inc.
Eric McIntush, PhD | Chief Scientific Officer Date: June 21, 2019



Detection of human Phospho XRCC1 (S518/T519/T523) by immunohistochemistry. *Samples:* FFPE serial sections of human breast adenocarcinoma. Mock phosphatase treated section (left) or calf intestinal phosphatase-treated section (right) immunostained for Phospho XRCC1 (S518/T519/T523). *Antibody:* Affinity purified rabbit anti-Phospho XRCC1 (S518/T519/T523) (Cat. No. IHC-00115) used at a dilution of 1:250. *Detection:* DAB



Detection of mouse Phospho XRCC1 (S518/T519/T523) by immunohistochemistry. *Samples:* FFPE serial sections of mouse squamous cell carcinoma. Mock phosphatase treated section (left) or calf intestinal phosphatase-treated section (right) immunostained for Phospho XRCC1 (S518/T519/T523). *Antibody:* Affinity purified rabbit anti-Phospho XRCC1 (S518/T519/T523) (Cat. No. IHC-00115) used at a dilution of 1:250. *Detection:* DAB



Detection of human Phospho XRCC1 (S518/T519/T523) by immunohistochemistry. *Sample:* FFPE section of human breast carcinoma. *Antibody:* Affinity purified rabbit anti-Phospho XRCC1 (S518/T519/T523) (Cat. No. IHC-00115) used at a dilution of 1:100. *Detection:* Red-fluorescent Alexa Fluor® 555 goat anti-rabbit IgG (Invitrogen) used at a dilution of 1:500.