

RNF40 IHC Antibody

Rabbit Polyclonal

Antigen Affinity Purified

Protein ID NP_055586.1

Catalog No. IHC-00102

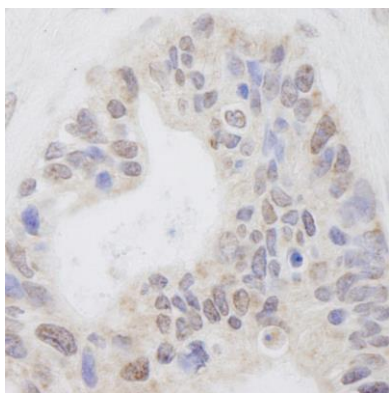
GeneID 9810

Lot No. IHC-00102-1

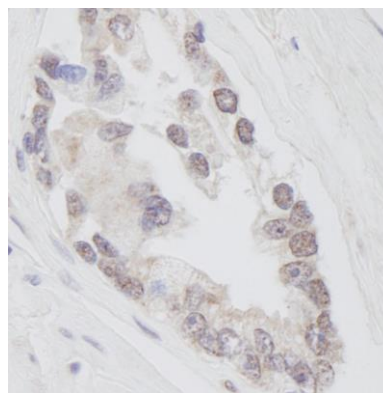


APPLICATIONS	IHC
SPECIES REACTIVITY	Human
PRESUMED REACTIVITY	Based on 100% sequence identity, this antibody is predicted to react with Monkey, Gorilla, Chimpanzee, Northern white-cheeked gibbon and Crab-eating macaque
AMOUNT	100 µl
CONCENTRATION	250 µg/ml
STORAGE/SHELF LIFE	2 – 8° C / 1 year from date of receipt
PHYSICAL STATE	Liquid
BUFFER	Tris-buffered Saline containing 0.1% BSA and 0.09% Sodium Azide
ISOTYPE	IgG
ORIGIN	USA
PRODUCTION PROCEDURES	Antibody was affinity purified using an epitope specific to RNF40 immobilized on solid support. The epitope recognized by IHC-00102 maps to a region between residue 540 and 590 of human Ring Finger 40 using the numbering given in entry NP_055586.1 (GeneID 9810).
APPLICATIONS	Centrifuge tube to remove product from lid. Optimal working dilutions should be determined experimentally by the investigator. Prepare working dilution immediately before use. Immunohistochemistry 1:100 – 1:500
APPLICATION NOTES	Epitope exposure is recommended. Epitope exposure with citrate buffer will enhance staining. Likely to work with frozen sections. In some cases, the antibody may be diluted further than indicated.
IHC HUMAN CONTROLS	Non-Small Cell Lung Cancer, Ovarian Carcinoma, Prostate Carcinoma, Testicular Seminoma
ADDITIONAL INFO	https://www.bethyl.com/product/IHC-00102 Use the link above to view SDS, a current list of citations, and other product specific information.

This document certifies that this product has met all of the quality control standards defined by Bethyl Laboratories, Inc.
Eric McIntush, PhD | Chief Scientific Officer Date: June 21, 2019



Detection of human RNF40 by immunohistochemistry.
Sample: FFPE section of human mucinous ovarian carcinoma. *Antibody:* Affinity purified rabbit anti-RNF40 (Cat. No. IHC-00102) used at a dilution of 1:250.
Detection: DAB staining using anti-rabbit IHC antibody (Cat. No. A120-501P) at a dilution of 1:100.



Detection of human RNF40 by immunohistochemistry.
Sample: FFPE section of human prostate adenocarcinoma. *Antibody:* Affinity purified rabbit anti-RNF40 (Cat. No. IHC-00102) used at a dilution of 1:250. *Detection:* DAB