

Histone H4 IHC Antibody

Rabbit Polyclonal

Antigen Affinity Purified

Protein ID NP_778224.1

Catalog No. IHC-00098

GeneID 121504

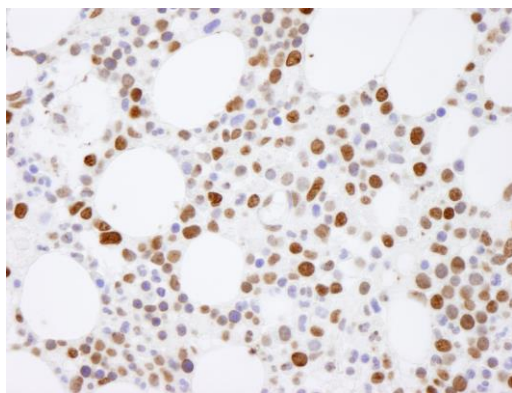
Lot No. IHC-00098-1



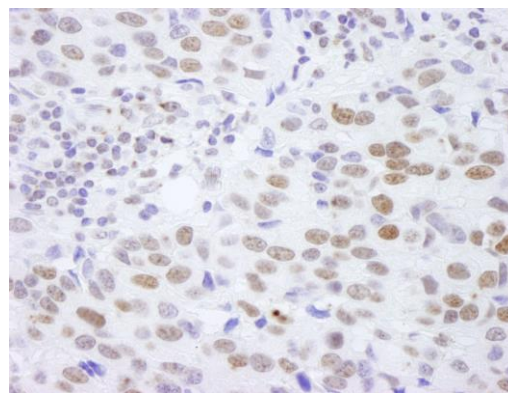
| | |
|------------------------------|--|
| APPLICATIONS | IHC |
| SPECIES REACTIVITY | Human |
| PRESUMED REACTIVITY | Based on 100% sequence identity, this antibody is predicted to react with Mouse, Rat, D. melanogaster, Zebrafish, X. laevis, X. tropicalis, Chicken, Bovine, Pig, Orangutan and Striped sun sea star |
| AMOUNT | 100 µl |
| CONCENTRATION | 250 µg/ml |
| STORAGE/SHELF LIFE | 2 – 8° C / 1 year from date of receipt |
| PHYSICAL STATE | Liquid |
| BUFFER | Tris-buffered Saline containing 0.1% BSA and 0.09% Sodium Azide |
| ISOTYPE | IgG |
| ORIGIN | USA |
| PRODUCTION PROCEDURES | Antibody was affinity purified using an epitope specific to Histone H4 immobilized on solid support. The epitope recognized by IHC-00098 maps to a region between residue 50 and the C-terminus (residue 103) of human Histone H4 using the numbering given in entry NP_778224.1 (GeneID 121504). |
| APPLICATIONS | Centrifuge tube to remove product from lid. Optimal working dilutions should be determined experimentally by the investigator. Prepare working dilution immediately before use. Immunohistochemistry 1:100 – 1:500 |
| APPLICATION NOTES | Epitope exposure is recommended. Epitope exposure with citrate buffer will enhance staining. Likely to work with frozen sections |
| IHC HUMAN CONTROLS | In some cases, the antibody may be diluted further than indicated. Breast Carcinoma, Colon Carcinoma, Laryngeal Squamous Cell Carcinoma, Linitis Plastica Stomach Cancer, Non-Small Cell Lung Cancer, Ovarian Carcinoma, Prostate Carcinoma, Skin Basal Cell Carcinoma, Skin Squamous Cell Carcinoma, Stomach Adenocarcinoma, Testicular Seminoma |
| ADDITIONAL INFO | https://www.bethyl.com/product/IHC-00098 Use the link above to view SDS, a current list of citations, and other product specific information. |

This document certifies that this product has met all of the quality control standards defined by Bethyl Laboratories, Inc.
Eric McIntush, PhD | Chief Scientific Officer

Date: June 21, 2019



Detection of human Histone H4 by immunohistochemistry. *Sample:* FFPE section of human metastatic bone marrow. *Antibody:* Affinity purified rabbit anti-Histone H4 (Cat. No. IHC-00098) used at a dilution of 1:250. *Detection:* DAB staining using anti-rabbit IHC antibody (Cat. No. A120-501P) at a dilution of 1:100.



Detection of human Histone H4 by immunohistochemistry. *Sample:* FFPE section of human breast adenocarcinoma. *Antibody:* Affinity purified rabbit anti-Histone H4 (Cat. No. IHC-00098) used at a dilution of 1:250. *Detection:* DAB