

GAPDH IHC Antibody

Rabbit Polyclonal

Antigen Affinity Purified

Protein ID NP_001001303.1

Catalog No. IHC-00096

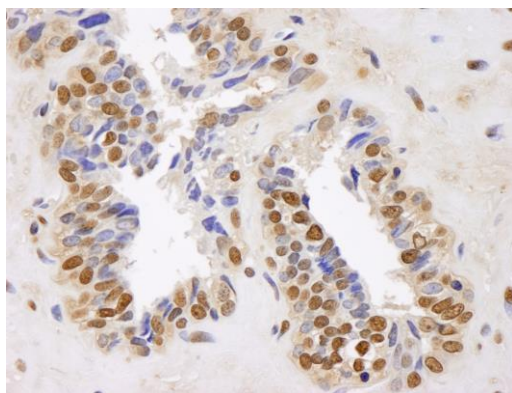
GeneID 2597

Lot No. IHC-00096-1

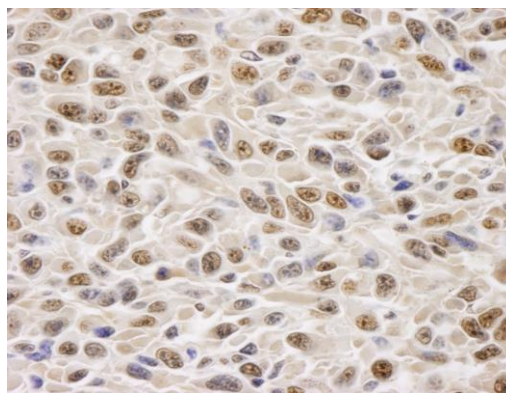


APPLICATIONS	IHC
SPECIES REACTIVITY	Human, Mouse
PRESUMED REACTIVITY	Based on 100% sequence identity, this antibody is predicted to react with Rat, Chicken, Turkey, Guinea pig_10141, Pig, Monkey, Gorilla, Chimpanzee, Crab-eating macaque, Neobatrachia and Sauropsida
AMOUNT	100 µl
CONCENTRATION	100 µg/ml
STORAGE/SHELF LIFE	2 – 8° C / 1 year from date of receipt
PHYSICAL STATE	Liquid
BUFFER	Tris-buffered Saline containing 0.1% BSA and 0.09% Sodium Azide
ISOTYPE	IgG
ORIGIN	USA
PRODUCTION PROCEDURES	Antibody was affinity purified using an epitope specific to GAPDH immobilized on solid support. The epitope recognized by IHC-00096 maps to a region between residues 250 and 300 of human Glyceraldehyde-3-Phosphate Dehydrogenase using the numbering given in entry NP_002037.2 (GeneID 2597).
APPLICATIONS	Centrifuge tube to remove product from lid. Optimal working dilutions should be determined experimentally by the investigator. Prepare working dilution immediately before use. Immunohistochemistry 1:100 – 1:500
APPLICATION NOTES	Epitope exposure is recommended. Epitope exposure with citrate buffer will enhance staining. Likely to work with frozen sections. In some cases, the antibody may be diluted further than indicated.
IHC HUMAN CONTROLS	Linitis Plastica Stomach Cancer, Ovarian Carcinoma, Prostate Carcinoma, Skin Basal Cell Carcinoma, Skin Squamous Cell Carcinoma, Stomach Adenocarcinoma
IHC MOUSE CONTROLS	Squamous Cell Carcinoma
ADDITIONAL INFO	https://www.bethyl.com/product/IHC-00096 Use the link above to view SDS, a current list of citations, and other product specific information.

This document certifies that this product has met all of the quality control standards defined by Bethyl Laboratories, Inc.
Eric McIntush, PhD | Chief Scientific Officer Date: June 21, 2019



Detection of human GAPDH by immunohistochemistry.
Sample: FFPE section of human prostate adenocarcinoma.
Antibody: Affinity purified rabbit anti-GAPDH (Cat. No. IHC-00096) used at a dilution of 1:250. *Detection:* DAB staining using anti-rabbit IHC antibody (Cat. No. A120-501P) at a dilution of 1:100.



Detection of mouse GAPDH by immunohistochemistry.
Sample: FFPE section of mouse squamous cell carcinoma.
Antibody: Affinity purified rabbit anti-GAPDH (Cat. No. IHC-00096) used at a dilution of 1:250. *Detection:* DAB