

# TAFII68 IHC Antibody

Rabbit Polyclonal

Antigen Affinity Purified

Protein ID Q92804

Catalog No. IHC-00094

GeneID 8148

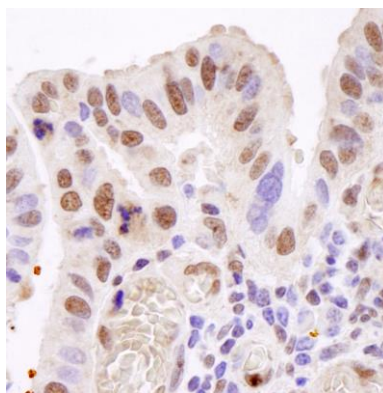
Lot No. IHC-00094-1



<b>APPLICATIONS</b>	IHC
<b>SPECIES REACTIVITY</b>	Human
<b>PRESUMED REACTIVITY</b>	Based on 100% sequence identity, this antibody is predicted to react with Orangutan, Gorilla, Chimpanzee, Northern white-cheeked gibbon and White-tufted-ear marmoset
<b>AMOUNT</b>	100 µl
<b>CONCENTRATION</b>	100 µg/ml
<b>STORAGE/SHELF LIFE</b>	2 – 8° C / 1 year from date of receipt
<b>PHYSICAL STATE</b>	Liquid
<b>BUFFER</b>	Tris-buffered Saline containing 0.1% BSA and 0.09% Sodium Azide
<b>ISOTYPE</b>	IgG
<b>ORIGIN</b>	USA
<b>PRODUCTION PROCEDURES</b>	Antibody was affinity purified using an epitope specific to TAFII68 immobilized on solid support.  The epitope recognized by IHC-00094 maps to a region between residue 200 and 250 of human TAFII68 using the numbering given in Swiss-Prot entry Q92804 (GeneID 8148).
<b>APPLICATIONS</b>	Centrifuge tube to remove product from lid. Optimal working dilutions should be determined experimentally by the investigator. Prepare working dilution immediately before use.  Immunohistochemistry 1:100 – 1:500
<b>APPLICATION NOTES</b>	Epitope exposure is recommended.  Epitope exposure with citrate buffer will enhance staining.  Likely to work with frozen sections.
<b>IHC HUMAN CONTROLS</b>	In some cases, the antibody may be diluted further than indicated. Breast Carcinoma, Colon Carcinoma, Laryngeal Squamous Cell Carcinoma, Ovarian Carcinoma, Skin Basal Cell Carcinoma, Stomach Adenocarcinoma, Testicular Seminoma
<b>ADDITIONAL INFO</b>	<a href="https://www.bethyl.com/product/IHC-00094">https://www.bethyl.com/product/IHC-00094</a> Use the link above to view SDS, a current list of citations, and other product specific information.

This document certifies that this product has met all of the quality control standards defined by Bethyl Laboratories, Inc.  
Eric McIntush, PhD | Chief Scientific Officer

Date: June 21, 2019

**Detection of human TAFII68 by immunohistochemistry.**

*Sample:* FFPE section of human stomach adenocarcinoma.

*Antibody:* Affinity purified rabbit anti-TAFII68 (Cat. No. IHC-00094) used at a dilution of 1:250. *Detection:* DAB staining using anti-rabbit IHC antibody (Cat. No. A120-501P) at a dilution of 1:100.