

RPL26 IHC Antibody

Rabbit Polyclonal

Antigen Affinity Purified

Protein ID NP_000978.1

Catalog No. IHC-00093

GeneID 6154

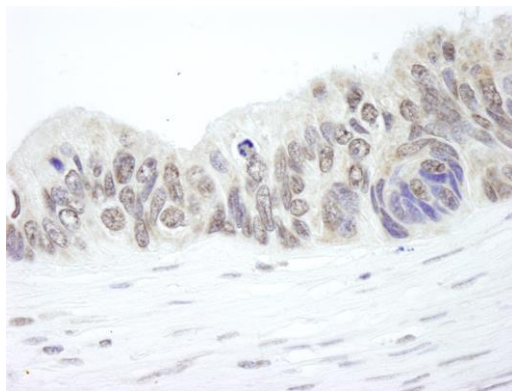
Lot No. IHC-00093-1



APPLICATIONS	IHC
SPECIES REACTIVITY	Human
PRESUMED REACTIVITY	Based on 100% sequence identity, this antibody is predicted to react with Mouse, Rat, Zebrafish, X. laevis, X. tropicalis, Chicken, Turkey, Bovine, Horse, Rabbit, Guinea pig_10141, Pig, Panda and Monkey
AMOUNT	100 µl
CONCENTRATION	100 µg/ml
STORAGE/SHELF LIFE	2 – 8° C / 1 year from date of receipt
PHYSICAL STATE	Liquid
BUFFER	Tris-buffered Saline containing 0.1% BSA and 0.09% Sodium Azide
ISOTYPE	IgG
ORIGIN	USA
PRODUCTION PROCEDURES	Antibody was affinity purified using an epitope specific to RPL26 immobilized on solid support. The epitope recognized by IHC-00093 maps to a region between residue 100 and the C-terminus (residue 145) of human Ribosomal Protein L26 using the numbering given in entry NP_000978.1 (GeneID 6154).
APPLICATIONS	Centrifuge tube to remove product from lid. Optimal working dilutions should be determined experimentally by the investigator. Prepare working dilution immediately before use. Immunohistochemistry 1:100 – 1:500
APPLICATION NOTES	Epitope exposure is recommended. Epitope exposure with citrate buffer will enhance staining. Likely to work with frozen sections.
IHC HUMAN CONTROLS	In some cases, the antibody may be diluted further than indicated. Laryngeal Squamous Cell Carcinoma, Ovarian Carcinoma, Prostate Carcinoma, Skin Basal Cell Carcinoma, Stomach Adenocarcinoma, Testicular Seminoma
ADDITIONAL INFO	https://www.bethyl.com/product/IHC-00093 Use the link above to view SDS, a current list of citations, and other product specific information.

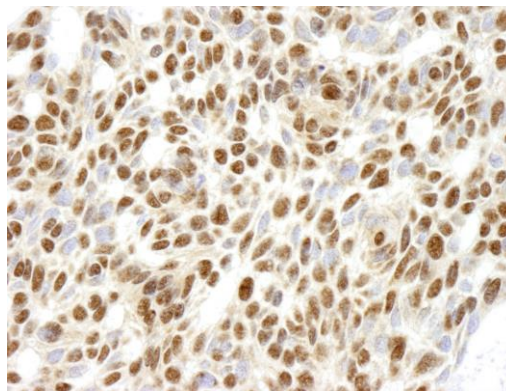
This document certifies that this product has met all of the quality control standards defined by Bethyl Laboratories, Inc.
Eric McIntush, PhD | Chief Scientific Officer

Date: June 21, 2019

**Detection of human RPL26 by immunohistochemistry.**

Sample: FFPE section of human ovarian carcinoma.

Antibody: Affinity purified rabbit anti-RPL26 (Cat. No. IHC-00093) used at a dilution of 1:500. *Detection:* DAB staining using anti-rabbit IHC antibody (Cat. No. A120-501P) at a dilution of 1:100.

**Detection of human RPL26 by immunohistochemistry.**

Sample: FFPE section of human skin basal cell carcinoma.

Antibody: Affinity purified rabbit anti-RPL26 (Cat. No. IHC-00093) used at a dilution of 1:250. *Detection:* DAB