

VCP IHC Antibody

Rabbit Polyclonal

Antigen Affinity Purified

Protein ID NP_009057.1

Catalog No. IHC-00084

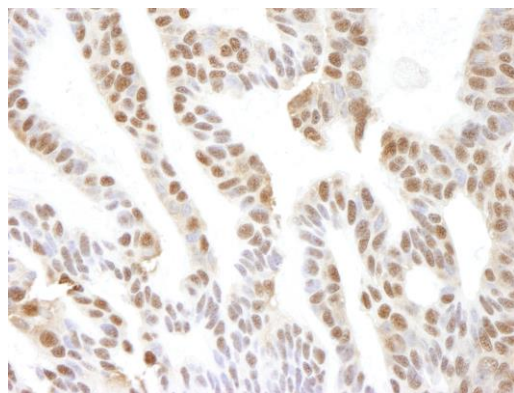
GeneID 7415

Lot No. IHC-00084-2



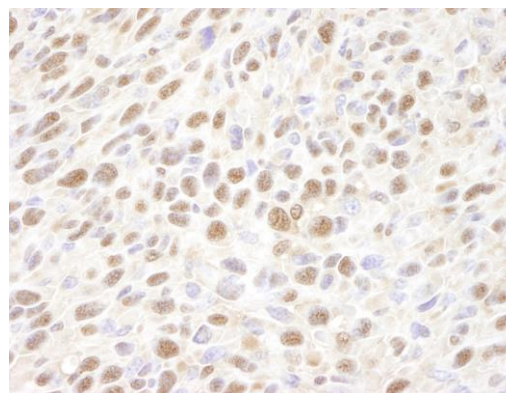
APPLICATIONS	IHC
SPECIES REACTIVITY	Human, Mouse
PRESUMED REACTIVITY	Based on 100% sequence identity, this antibody is predicted to react with Rat, Bovine, Dog, Horse, Rabbit, Guinea pig_10141, Pig, Panda, Orangutan, Monkey, Gorilla and Chimpanzee
AMOUNT	100 µl
CONCENTRATION	200 µg/ml
STORAGE/SHELF LIFE	2 – 8° C / 1 year from date of receipt
PHYSICAL STATE	Liquid
BUFFER	Tris-buffered Saline containing 0.1% BSA and 0.09% Sodium Azide
ISOTYPE	IgG
ORIGIN	USA
PRODUCTION PROCEDURES	Antibody was affinity purified using an epitope specific to VCP immobilized on solid support. The epitope recognized by IHC-00084 maps to a region between residue 750 and the C-terminus (residue 806) of human Valosin-Containing Protein using the numbering given in entry NP_009057.1 (GeneID 7415).
APPLICATIONS	Centrifuge tube to remove product from lid. Optimal working dilutions should be determined experimentally by the investigator. Prepare working dilution immediately before use. Immunohistochemistry 1:100 – 1:500
APPLICATION NOTES	Epitope exposure is recommended. Epitope exposure with citrate buffer will enhance staining. Likely to work with frozen sections.
IHC HUMAN CONTROLS	In some cases, the antibody may be diluted further than indicated. Laryngeal Squamous Cell Carcinoma, Non-Small Cell Lung Cancer, Ovarian Carcinoma, Prostate Carcinoma, Skin Basal Cell Carcinoma, Stomach Adenocarcinoma
IHC MOUSE CONTROLS	Squamous Cell Carcinoma
ADDITIONAL INFO	https://www.bethyl.com/product/IHC-00084 Use the link above to view SDS, a current list of citations, and other product specific information.

This document certifies that this product has met all of the quality control standards defined by Bethyl Laboratories, Inc.
Eric McIntush, PhD | Chief Scientific Officer Date: June 21, 2019

**Detection of human VCP by immunohistochemistry.**

Sample: FFPE section of human skin basal cell carcinoma.

Antibody: Affinity purified rabbit anti-VCP (Cat. No. IHC-00084) used at a dilution of 1:250. *Detection:* DAB staining using anti-rabbit IHC antibody (Cat. No. A120-501P) at a dilution of 1:100.

**Detection of mouse VCP by immunohistochemistry.**

Sample: FFPE section of mouse squamous cell carcinoma.

Antibody: Affinity purified rabbit anti-VCP (Cat. No. IHC-00084) used at a dilution of 1:250. *Detection:* DAB