

Nucleolin (NCL) IHC Antibody

Rabbit Polyclonal

Antigen Affinity Purified

Protein ID NP_005372.2

Catalog No. IHC-00083

GeneID 4691

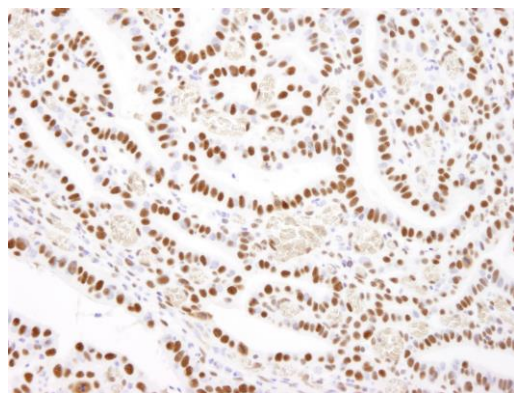
Lot No. IHC-00083-1



APPLICATIONS	IHC
SPECIES REACTIVITY	Human, Mouse
PRESUMED REACTIVITY	Based on 100% sequence identity, this antibody is predicted to react with Rat, Bovine, Dog, Horse, Rabbit, Guinea pig_10141, Pig, Panda, Orangutan, Monkey, Gorilla and Chimpanzee
AMOUNT	100 µl
CONCENTRATION	50 µg/ml
STORAGE/SHELF LIFE	2 – 8° C / 1 year from date of receipt
PHYSICAL STATE	Liquid
BUFFER	Tris-buffered Saline containing 0.1% BSA and 0.09% Sodium Azide
ISOTYPE	IgG
ORIGIN	USA
PRODUCTION PROCEDURES	Antibody was affinity purified using an epitope specific to Nucleolin immobilized on solid support. The epitope recognized by IHC-00083 maps to a region between residue 550 and the C-terminus (residue 710) of human Nucleolin using the numbering given in entry NP_005372.2 (GeneID 4691).
APPLICATIONS	Centrifuge tube to remove product from lid. Optimal working dilutions should be determined experimentally by the investigator. Prepare working dilution immediately before use. Immunohistochemistry 1:100 – 1:500
APPLICATION NOTES	Epitope exposure is recommended. Epitope exposure with citrate buffer will enhance staining. Likely to work with frozen sections.
IHC HUMAN CONTROLS	In some cases, the antibody may be diluted further than indicated. Breast Carcinoma, Colon Carcinoma, Laryngeal Squamous Cell Carcinoma, Linitis Plastica Stomach Cancer, Non-Small Cell Lung Cancer, Ovarian Carcinoma, Prostate Carcinoma, Skin Basal Cell Carcinoma, Skin Squamous Cell Carcinoma, Small Cell Lung Cancer, Stomach Adenocarcinoma, Testicular Seminoma
IHC MOUSE CONTROLS	Squamous Cell Carcinoma
ADDITIONAL INFO	https://www.bethyl.com/product/IHC-00083 Use the link above to view SDS, a current list of citations, and other product specific information.

This document certifies that this product has met all of the quality control standards defined by Bethyl Laboratories, Inc.
Eric McIntush, PhD | Chief Scientific Officer

Date: June 21, 2019

**Detection of human Nucleolin by immunohistochemistry.**

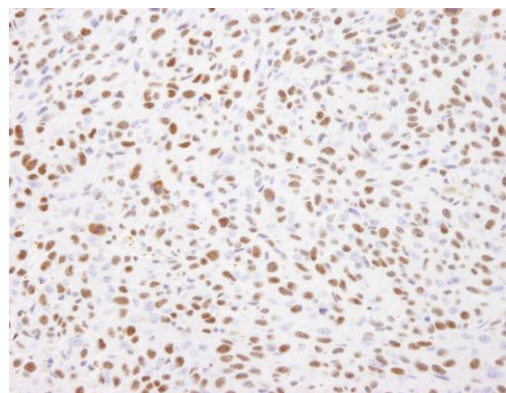
Sample: FFPE section of human stomach adenocarcinoma.

Antibody: Affinity purified rabbit anti-Nucleolin (Cat. No.

IHC-00083) used at a dilution of 1:250. *Detection:* DAB

staining using anti-rabbit IHC antibody (Cat. No.

A120-501P) at a dilution of 1:100.

**Detection of mouse Nucleolin by immunohistochemistry.**

Sample: FFPE section of mouse squamous cell carcinoma.

Antibody: Affinity purified rabbit anti-Nucleolin (Cat. No.

IHC-00083) used at a dilution of 1:250. *Detection:* DAB

staining using anti-rabbit IHC antibody (Cat. No.

A120-501P) at a dilution of 1:100.