

MSH2 IHC Antibody

Rabbit Polyclonal

Antigen Affinity Purified

Protein ID P43246

Catalog No. IHC-00082

GeneID 4436

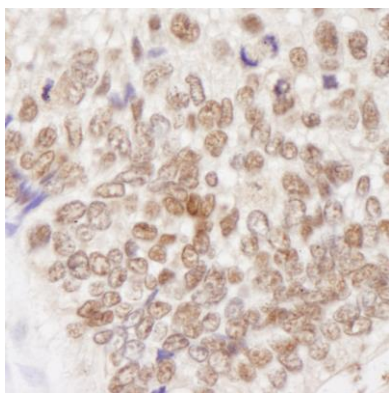
Lot No. IHC-00082-1



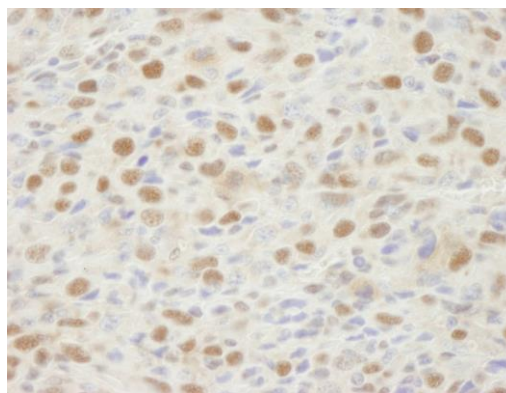
APPLICATIONS	IHC
SPECIES REACTIVITY	Human, Mouse
PRESUMED REACTIVITY	Based on 100% sequence identity, this antibody is predicted to react with Guinea pig_10141, Pig, Panda, Orangutan, Monkey, Gorilla, Northern white-cheeked gibbon, Naked mole rat and Ferret
AMOUNT	100 µl
CONCENTRATION	250 µg/ml
STORAGE/SHELF LIFE	2 – 8° C / 1 year from date of receipt
PHYSICAL STATE	Liquid
BUFFER	Tris-buffered Saline containing 0.1% BSA and 0.09% Sodium Azide
ISOTYPE	IgG
ORIGIN	USA
PRODUCTION PROCEDURES	Antibody was affinity purified using an epitope specific to MSH2 immobilized on solid support. The epitope recognized by IHC-00082 maps to a region between residue 875 and the C-terminus (residue 934) of human mutS homolog 2 using the numbering given in Swiss-Prot entry P43246 (GeneID 4436).
APPLICATIONS	Centrifuge tube to remove product from lid. Optimal working dilutions should be determined experimentally by the investigator. Prepare working dilution immediately before use. Immunohistochemistry 1:100 – 1:500
APPLICATION NOTES	Epitope exposure is recommended. Epitope exposure with citrate buffer will enhance staining. Likely to work with frozen sections.
IHC HUMAN CONTROLS	In some cases, the antibody may be diluted further than indicated. Breast Carcinoma, Colon Carcinoma, Laryngeal Squamous Cell Carcinoma, Ovarian Carcinoma, Prostate Carcinoma, Skin Basal Cell Carcinoma, Small Cell Lung Cancer, Testicular Seminoma
IHC MOUSE CONTROLS	Squamous Cell Carcinoma
ADDITIONAL INFO	https://www.bethyl.com/product/IHC-00082 Use the link above to view SDS, a current list of citations, and other product specific information.

This document certifies that this product has met all of the quality control standards defined by Bethyl Laboratories, Inc.
Eric McIntush, PhD | Chief Scientific Officer

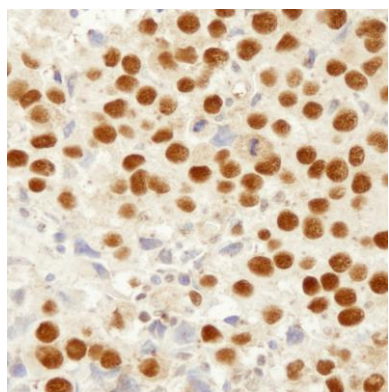
Date: June 21, 2019



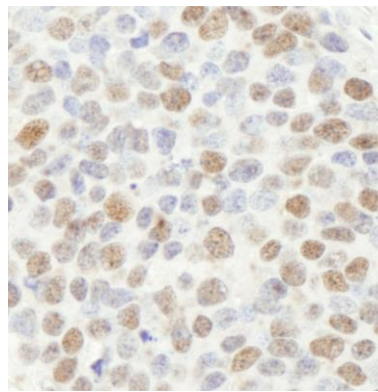
Detection of human MSH2 by immunohistochemistry.
Sample: FFPE section of human colon adenocarcinoma. *Antibody:* Affinity purified rabbit anti-MSH2 (Cat. No. IHC-00082) used at a dilution of 1:250. *Detection:* DAB staining using anti-rabbit IHC antibody (Cat. No. A120-501P) at a dilution of 1:100.



Detection of mouse MSH2 by immunohistochemistry.
Sample: FFPE section of mouse squamous cell carcinoma. *Antibody:* Affinity purified rabbit anti-MSH2 (Cat. No. IHC-00082) used at a dilution of 1:250. *Detection:* DAB



Detection of human MSH2 by immunohistochemistry.
Sample: FFPE section of human seminoma. *Antibody:* Affinity purified rabbit anti-MSH2 (Cat. No. IHC-00082) used at a dilution of 1:250. *Detection:* DAB



Detection of human MSH2 by immunohistochemistry.
Sample: FFPE section of human lung small cell carcinoma. *Antibody:* Affinity purified rabbit anti-MSH2 (Cat. No. IHC-00082) used at a dilution of 1:250. *Detection:* DAB staining using anti-rabbit IHC antibody (Cat. No. A120-501P) at a dilution of 1:100.