

Rad50 IHC Antibody

Rabbit Polyclonal

Antigen Affinity Purified

Protein ID NP_005723.2

Catalog No. IHC-00076

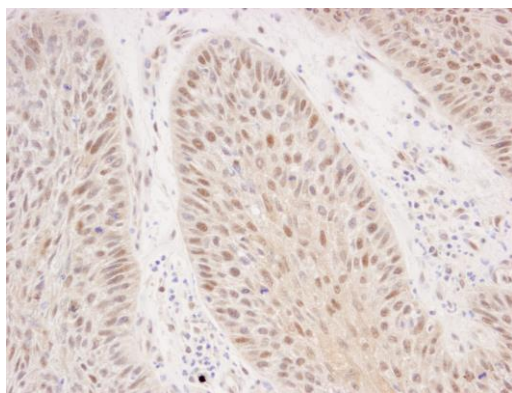
GeneID 10111

Lot No. IHC-00076-1



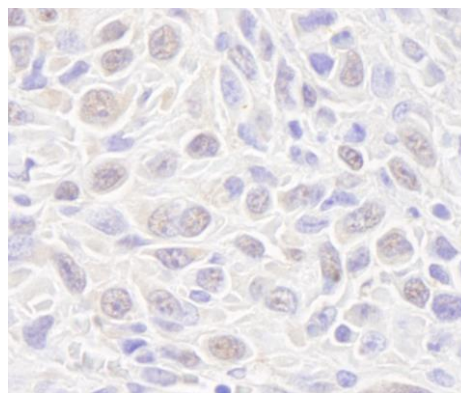
APPLICATIONS	IHC
SPECIES REACTIVITY	Human, Mouse
PRESUMED REACTIVITY	Based on 100% sequence identity, this antibody is predicted to react with Bovine, Dog, Rabbit, Orangutan, Monkey, Gorilla, Chimpanzee, Northern white-cheeked gibbon and Little brown bat
AMOUNT	100 µl
CONCENTRATION	250 µg/ml
STORAGE/SHELF LIFE	2 – 8° C / 1 year from date of receipt
PHYSICAL STATE	Liquid
BUFFER	Tris-buffered Saline containing 0.1% BSA and 0.09% Sodium Azide
ISOTYPE	IgG
ORIGIN	USA
PRODUCTION PROCEDURES	Antibody was affinity purified using an epitope specific to Rad50 immobilized on solid support. The epitope recognized by IHC-00076 maps to a region between residue 700 and 750 of human Rad50 using the numbering given in entry NP_005723.2 (GeneID 10111).
APPLICATIONS	Centrifuge tube to remove product from lid. Optimal working dilutions should be determined experimentally by the investigator. Prepare working dilution immediately before use. Immunohistochemistry 1:100 – 1:500
APPLICATION NOTES	Epitope exposure is recommended. Epitope exposure with citrate buffer will enhance staining. Likely to work with frozen sections. In some cases, the antibody may be diluted further than indicated.
IHC HUMAN CONTROLS	Laryngeal Squamous Cell Carcinoma, Metastatic Lymph Node, Ovarian Carcinoma, Pancreatic Islet Cell Tumor, Prostate Carcinoma, Skin Basal Cell Carcinoma
IHC MOUSE CONTROLS	Squamous Cell Carcinoma
ADDITIONAL INFO	https://www.bethyl.com/product/IHC-00076 Use the link above to view SDS, a current list of citations, and other product specific information.

This document certifies that this product has met all of the quality control standards defined by Bethyl Laboratories, Inc.
Eric McIntush, PhD | Chief Scientific Officer Date: June 21, 2019

**Detection of human Rad50 by immunohistochemistry.**

Sample: FFPE section of human larynx squamous cell carcinoma. *Antibody:* Affinity purified rabbit anti-Rad50 (Cat. No. IHC-00076) used at a dilution of 1:250.

Detection: DAB staining using anti-rabbit IHC antibody (Cat. No. A120-501P) at a dilution of 1:100.

**Detection of mouse Rad50 by immunohistochemistry.**

Sample: FFPE section of mouse squamous cell carcinoma.

Antibody: Affinity purified rabbit anti-Rad50 (Cat. No. IHC-00076) used at a dilution of 1:250. *Detection:* DAB