

MDC1 IHC Antibody

Rabbit Polyclonal

Antigen Affinity Purified

Protein ID NP_055456.1

Catalog No. IHC-00075

GeneID 9656

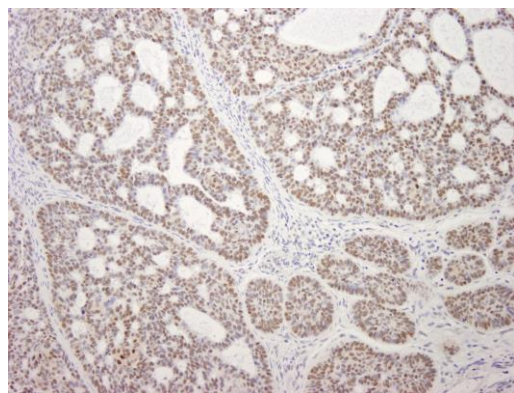
Lot No. IHC-00075-1



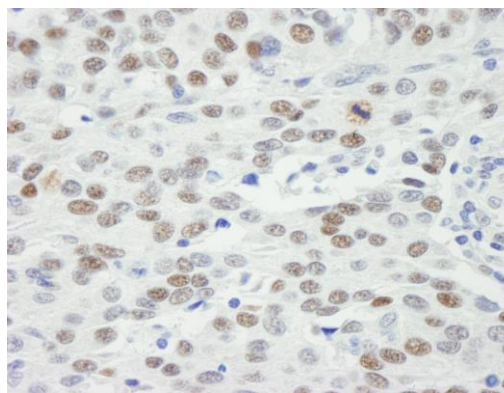
APPLICATIONS	IHC
SPECIES REACTIVITY	Human
PRESUMED REACTIVITY	Based on 100% sequence identity, this antibody is predicted to react with Chimpanzee
AMOUNT	100 µl
CONCENTRATION	250 µg/ml
STORAGE/SHELF LIFE	2 – 8° C / 1 year from date of receipt
PHYSICAL STATE	Liquid
BUFFER	Tris-buffered Saline containing 0.1% BSA and 0.09% Sodium Azide
ISOTYPE	IgG
ORIGIN	USA
PRODUCTION PROCEDURES	Antibody was affinity purified using an epitope specific to MDC1 immobilized on solid support. The epitope recognized by IHC-00075 maps to a region between residue 1375 and 1425 of human Mediator of DNA Damage Checkpoint Protein 1 using the numbering given in entry NP_055456.1 (GeneID 9656).
APPLICATIONS	Centrifuge tube to remove product from lid. Optimal working dilutions should be determined experimentally by the investigator. Prepare working dilution immediately before use. Immunohistochemistry 1:100 – 1:500
APPLICATION NOTES	Epitope exposure is recommended. Epitope exposure with citrate buffer will enhance staining. Likely to work with frozen sections. In some cases, the antibody may be diluted further than indicated.
IHC HUMAN CONTROLS	Breast Carcinoma, Colon Carcinoma, Laryngeal Squamous Cell Carcinoma, Ovarian Carcinoma, Prostate Carcinoma, Skin Basal Cell Carcinoma, Skin Squamous Cell Carcinoma, Stomach Adenocarcinoma, Testicular Seminoma
ADDITIONAL INFO	https://www.bethyl.com/product/IHC-00075 Use the link above to view SDS, a current list of citations, and other product specific information.

This document certifies that this product has met all of the quality control standards defined by Bethyl Laboratories, Inc.
Eric McIntush, PhD | Chief Scientific Officer

Date: June 21, 2019

**Detection of human MDC1 by immunohistochemistry.**

Sample: FFPE section of human skin tumor. *Antibody:* Affinity purified rabbit anti-MDC1 (Cat. No. IHC-00075) used at a dilution of 1:250. *Detection:* DAB staining using anti-rabbit IHC antibody (Cat. No. A120-501P) at a dilution of 1:100.

**Detection of human MDC1 by immunohistochemistry.**

Sample: FFPE section of human breast adenocarcinoma. *Antibody:* Affinity purified rabbit anti-MDC1 (Cat. No. IHC-00075) used at a dilution of 1:250. *Detection:* DAB