

# Phospho KAP-1 (S824) IHC Antibody

Rabbit Polyclonal

Antigen Affinity Purified

Protein ID NP\_005753.1

Catalog No. IHC-00073

GeneID 10155

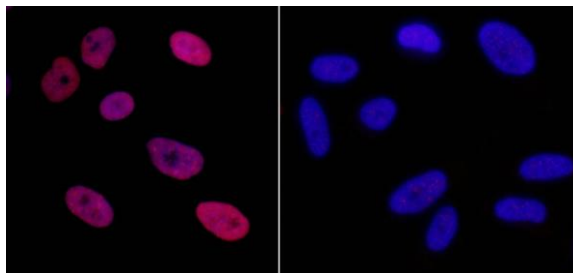
Lot No. IHC-00073-2



<b>APPLICATIONS</b>	ICC-IF
<b>SPECIES REACTIVITY</b>	Human
<b>PRESUMED REACTIVITY</b>	Based on 100% sequence identity, this antibody is predicted to react with Mouse, Orangutan, Monkey, Gorilla, Chimpanzee, Northern white-cheeked gibbon, Crab-eating macaque and White-tufted-ear marmoset
<b>AMOUNT</b>	100 µl
<b>CONCENTRATION</b>	50 µg/ml
<b>STORAGE/SHELF LIFE</b>	2 – 8° C / 1 year from date of receipt
<b>PHYSICAL STATE</b>	Liquid
<b>BUFFER</b>	Tris-buffered Saline containing 0.1% BSA and 0.09% Sodium Azide
<b>ISOTYPE</b>	IgG
<b>ORIGIN</b>	USA
<b>PRODUCTION PROCEDURES</b>	<p>Antibody was affinity purified using an epitope specific to Phospho KAP-1 (S824) immobilized on solid support.</p> <p>Immunogen was a synthetic phosphorylated peptide, which represented a portion of human KRAB-Associated Protein 1 surrounding Serine 824 according to the numbering given in entry NP_005753.1 (GeneID 10155).</p>
<b>APPLICATIONS</b>	<p>Centrifuge tube to remove product from lid. Optimal working dilutions should be determined experimentally by the investigator. Prepare working dilution immediately before use.</p> <p>Immunofluorescence 1:100 – 1:500 (ICC)</p>
<b>APPLICATION NOTES</b>	<p>Formaldehyde-fixed cells 1:100 – 1:500: Permeabilization with Triton-X 100 is recommended.</p> <p>Likely to work with frozen sections.</p> <p>In some cases, the antibody may be diluted further than indicated.</p>
<b>IHC HUMAN CONTROLS</b>	HeLa Cells
<b>ADDITIONAL INFO</b>	<p><a href="https://www.bethyl.com/product/IHC-00073">https://www.bethyl.com/product/IHC-00073</a></p> <p>Use the link above to view SDS, a current list of citations, and other product specific information.</p>

This document certifies that this product has met all of the quality control standards defined by Bethyl Laboratories, Inc.  
Eric McIntush, PhD | Chief Scientific Officer

Date: June 21, 2019



**Detection of human Phospho KAP-1 (S824) by immunocytochemistry.** *Samples:* Neocarzinostatin treated asynchronous HeLa cells (left) and untreated asynchronous HeLa cells (right). *Antibody:* Affinity purified rabbit anti-Phospho KAP-1 (S824) (Cat. No. IHC-00073 Lot2) used at a dilution of 1:250. *Detection:* Red fluorescent Anti-rabbit IgG-DyLight® 594 conjugated used at a dilution of 1:100.