

KAP-1 IHC Antibody

Rabbit Polyclonal

Antigen Affinity Purified

Protein ID NP_005753.1

Catalog No. IHC-00072

GeneID 10155

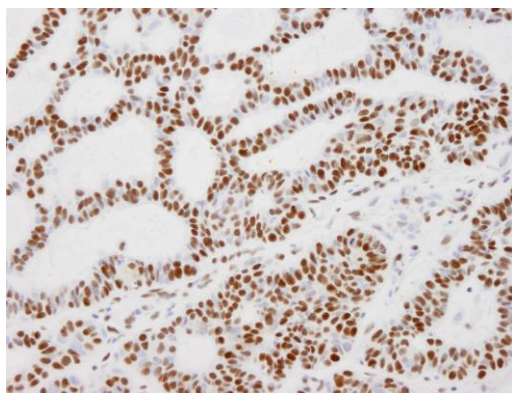
Lot No. IHC-00072-1



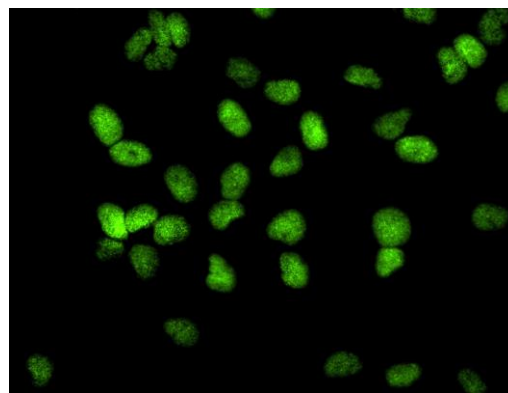
APPLICATIONS	IHC, ICC-IF
SPECIES REACTIVITY	Human
PRESUMED REACTIVITY	Based on 100% sequence identity, this antibody is predicted to react with Mouse, Bovine, Dog, Horse, Rabbit, Panda, Orangutan, Monkey, Gorilla, Chimpanzee, Chinese hamster and Small-eared galago
AMOUNT	100 µl
CONCENTRATION	100 µg/ml
STORAGE/SHELF LIFE	2 – 8° C / 1 year from date of receipt
PHYSICAL STATE	Liquid
BUFFER	Tris-buffered Saline containing 0.1% BSA and 0.09% Sodium Azide
ISOTYPE	IgG
ORIGIN	USA
PRODUCTION PROCEDURES	Antibody was affinity purified using an epitope specific to KAP-1 immobilized on solid support. The epitope recognized by IHC-00072 maps to a region between residue 1 and 50 of human Tripartite Motif-Containing 28 using the numbering given in entry NP_005753.1 (GeneID 10155).
APPLICATIONS	Centrifuge tube to remove product from lid. Optimal working dilutions should be determined experimentally by the investigator. Prepare working dilution immediately before use. Immunohistochemistry 1:100 – 1:500 Immunofluorescence (ICC) 1:100 – 1:500
APPLICATION NOTES	Formalin-fixed, paraffin-embedded tissue 1:100 – 1:500: Epitope exposure is recommended. Epitope exposure with citrate buffer will enhance staining. Formaldehyde-fixed cells 1:100 – 1:500: Permeabilization with Triton-X 100 is recommended. Likely to work with frozen sections.
IHC HUMAN CONTROLS	In some cases, the antibody may be diluted further than indicated. Breast Carcinoma, Colon Carcinoma, Laryngeal Squamous Cell Carcinoma, Linitis Plastica Stomach Cancer, Non-Small Cell Lung Cancer, Ovarian Carcinoma, Prostate Carcinoma, Skin Basal Cell Carcinoma, Skin Squamous Cell Carcinoma, Small Cell Lung Cancer, Stomach Adenocarcinoma, Testicular Seminoma
ADDITIONAL INFO	https://www.bethyl.com/product/IHC-00072 Use the link above to view SDS, a current list of citations, and other product specific information.

This document certifies that this product has met all of the quality control standards defined by Bethyl Laboratories, Inc.
Eric McIntush, PhD | Chief Scientific Officer

Date: June 21, 2019

**Detection of human KAP-1 by immunohistochemistry.**

Sample: FFPE section of human skin tumor. *Antibody:* Affinity purified rabbit anti-KAP-1 (Cat. No. IHC-00072) used at a dilution of 1:100. *Detection:* DAB staining using anti-rabbit IHC antibody (Cat. No. A120-501P) at a dilution of 1:100.

**Detection of human KAP-1 by immunocytochemistry.**

Samples: NBF-fixed asynchronous HeLa cells. *Antibody:* Affinity purified rabbit anti-KAP-1 (Cat. No. IHC-00072) used at a dilution of 1:250. *Detection:* Anti-rabbit IgG-FITC conjugated (Cat. No. A120-101F) used at a dilution of 1:100.