

PLK1 IHC Antibody

Rabbit Polyclonal

Antigen Affinity Purified

Protein ID P53350

Catalog No. IHC-00071

GeneID 5347

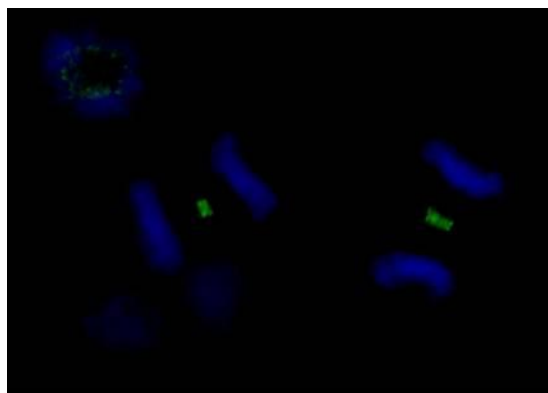
Lot No. IHC-00071-1



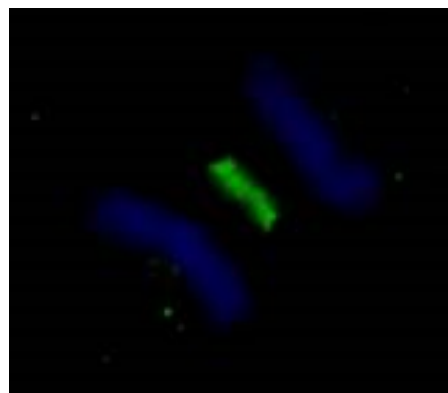
APPLICATIONS	ICC-IF
SPECIES REACTIVITY	Human
PRESUMED REACTIVITY	Based on 100% sequence identity, this antibody is predicted to react with Rabbit, Gorilla, Chimpanzee, Northern white-cheeked gibbon and White-tufted-ear marmoset
AMOUNT	100 µl
CONCENTRATION	250 µg/ml
STORAGE/SHELF LIFE	2 – 8° C / 1 year from date of receipt
PHYSICAL STATE	Liquid
BUFFER	Tris-buffered Saline containing 0.1% BSA and 0.09% Sodium Azide
ISOTYPE	IgG
ORIGIN	USA
PRODUCTION PROCEDURES	Antibody was affinity purified using an epitope specific to PLK1 immobilized on solid support. The epitopes recognized by IHC-00071 maps to a region between residues 325 and 375 of human Polo-like kinase using the numbering given in SwissProt entry P53350 (GeneID 5347).
APPLICATIONS	Centrifuge tube to remove product from lid. Optimal working dilutions should be determined experimentally by the investigator. Prepare working dilution immediately before use. Immunofluorescence 1:100 – 1:500 (ICC)
APPLICATION NOTES	Formaldehyde-Fixed Cells 1:100 – 1:500: Permeabilization with Triton-X 100 is recommended. Likely to work with frozen sections. In some cases, the antibody may be diluted further than indicated.
ADDITIONAL INFO	https://www.bethyl.com/product/IHC-00071 Use the link above to view SDS, a current list of citations, and other product specific information.

This document certifies that this product has met all of the quality control standards defined by Bethyl Laboratories, Inc.
Eric McIntush, PhD | Chief Scientific Officer

Date: June 21, 2019

**Detection of human PLK1 by immunocytochemistry.**

Samples: NBF-fixed asynchronous HeLa cells. *Antibody:* Affinity purified rabbit anti-PLK1 (Cat. No. IHC-00071) used at a dilution of 1:250. *Detection:* Anti-rabbit IgG-FITC conjugated (Cat. No. A120-101F) used at a dilution of 1:100.

**Detection of human PLK1 by immunocytochemistry.**

Samples: NBF-fixed asynchronous HeLa cells. *Antibody:* Affinity purified rabbit anti-PLK1 (Cat. No. IHC-00071) used at a dilution of 1:250. *Detection:* Anti-rabbit IgG-FITC conjugated (Cat. No. A120-101F) used at a dilution of 1:100.