

Phospho SMC3 (S1083) IHC Antibody

Rabbit Polyclonal

Antigen Affinity Purified

Protein ID Q9UQE7

Catalog No. IHC-00070

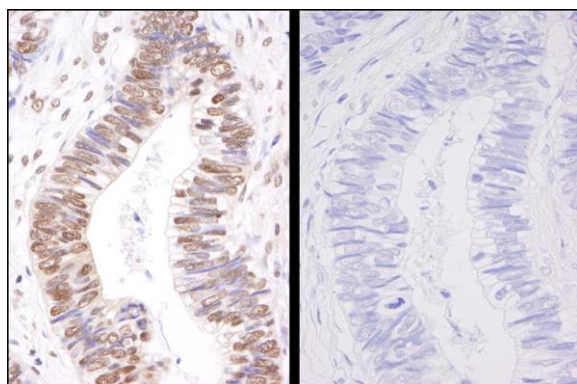
GeneID 9126

Lot No. IHC-00070-1

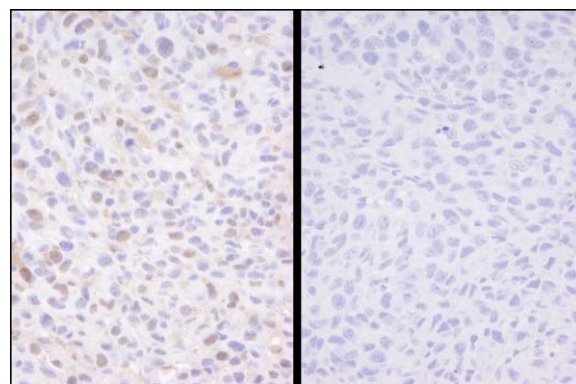


APPLICATIONS	IHC
SPECIES REACTIVITY	Human, Mouse
PRESUMED REACTIVITY	Based on 100% sequence identity, this antibody is predicted to react with Rat, Chicken, Turkey, Bovine, Dog, Horse, Rabbit, Guinea pig_10141, Pig, Panda, Orangutan, Monkey, Gorilla and Chimpanzee
AMOUNT	100 µl
CONCENTRATION	50 µg/ml
STORAGE/SHELF LIFE	2 – 8° C / 1 year from date of receipt
PHYSICAL STATE	Liquid
BUFFER	Tris-buffered Saline containing 0.1% BSA and 0.09% Sodium Azide
ISOTYPE	IgG
ORIGIN	USA
PRODUCTION PROCEDURES	Antibody was affinity purified using an epitope specific to Phospho SMC3 (S1083) immobilized on solid support. The epitope recognized by IHC-00070 maps to a region surrounding residue 1083 when Serine 1083 is phosphorylated of human Structural Maintenance of Chromosomes 3 using the numbering given in SwissProt entry Q9UQE7 (GeneID 9126).
APPLICATIONS	Centrifuge tube to remove product from lid. Optimal working dilutions should be determined experimentally by the investigator. Prepare working dilution immediately before use. Immunohistochemistry 1:100 – 1:500
APPLICATION NOTES	Epitope exposure is recommended. Epitope exposure with citrate buffer will enhance staining. Likely to work with frozen sections.
IHC HUMAN CONTROLS	In some cases, the antibody may be diluted further than indicated. Breast Carcinoma, Colon Carcinoma, Ovarian Carcinoma, Prostate Carcinoma, Stomach Adenocarcinoma, Testicular Seminoma
IHC MOUSE CONTROLS	Squamous Cell Carcinoma
ADDITIONAL INFO	https://www.bethyl.com/product/IHC-00070 Use the link above to view SDS, a current list of citations, and other product specific information.

This document certifies that this product has met all of the quality control standards defined by Bethyl Laboratories, Inc.
Eric McIntush, PhD | Chief Scientific Officer Date: June 21, 2019



Detection of human Phospho-SMC3 (S1083) by immunohistochemistry. *Samples:* FFPE serial sections of human colon adenocarcinoma. Mock phosphatase treated section (left) or calf intestinal phosphatase-treated section (right) immunostained for Phospho-SMC3. *Antibody:* Affinity purified rabbit anti-Phospho-SMC3 (S1083) (Cat. No. IHC-00070) used at a dilution of 1:250. *Detection:* DAB staining using anti-rabbit IHC Antibody (Cat. No. A120-501P) at a dilution of 1:100.



Detection of mouse Phospho-SMC3 (S1083) by immunohistochemistry. *Samples:* FFPE serial sections of mouse squamous cell carcinoma. Mock phosphatase treated section (left) or calf intestinal phosphatase-treated section (right) immunostained for Phospho-SMC3. *Antibody:* Affinity purified rabbit anti-Phospho-SMC3 (S1083) (Cat. No. IHC-00070) used at a dilution of 1:250. *Detection:* DAB