

CENP-F/Mitosin IHC Antibody

Rabbit Polyclonal

Antigen Affinity Purified

Protein ID P49454

Catalog No. IHC-00065

GeneID 1063

Lot No. IHC-00065-1



APPLICATIONS	ICC-IF
SPECIES REACTIVITY	Human
PRESUMED REACTIVITY	Based on 100% sequence identity, this antibody is predicted to react with Orangutan, Gorilla, Chimpanzee and Northern white-cheeked gibbon
AMOUNT	100 µl
CONCENTRATION	250 µg/ml
STORAGE/SHELF LIFE	2 – 8° C / 1 year from date of receipt
PHYSICAL STATE	Liquid
BUFFER	Tris-buffered Saline containing 0.1% BSA and 0.09% Sodium Azide
ISOTYPE	IgG
ORIGIN	USA
PRODUCTION PROCEDURES	Antibody was affinity purified using an epitope specific to CENP-F/Mitosin immobilized on solid support.

The epitope recognized by IHC-00065 maps to a region between residues 1800 and 1850 of human Centromere Protein F using the numbering given in SwissProt entry P49454 (GeneID 1063).

APPLICATIONS Centrifuge tube to remove product from lid. Optimal working dilutions should be determined experimentally by the investigator. Prepare working dilution immediately before use.

Immunofluorescence 1:100 – 1:500
(ICC)

APPLICATION NOTES Acetone-Fixed Cells 1:100 – 1:500:
Formaldehyde or methanol fixation is not recommended.

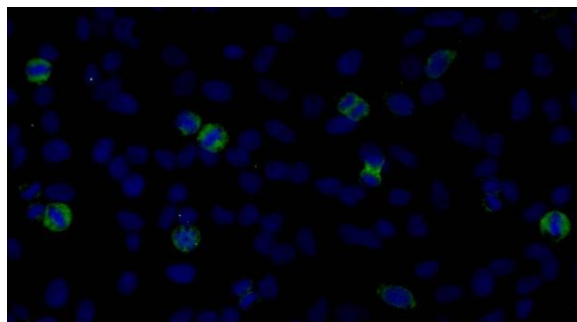
Likely to work with acetone-fixed frozen sections.

In some cases, the antibody may be diluted further than indicated.

ADDITIONAL INFO <https://www.bethyl.com/product/IHC-00065>

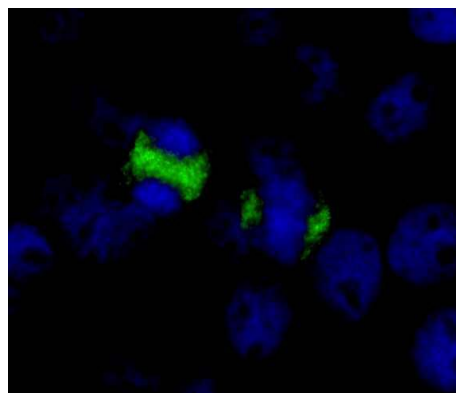
Use the link above to view SDS, a current list of citations, and other product specific information.

This document certifies that this product has met all of the quality control standards defined by Bethyl Laboratories, Inc.
Eric McIntush, PhD | Chief Scientific Officer Date: June 21, 2019

**Detection of human CENP-F by immunocytochemistry.**

Samples: Acetone-fixed asynchronous HeLa cells.

Antibody: Affinity purified rabbit anti-CENP-F (Cat. No. IHC-00065) used at a dilution of 1:250. *Detection:* Anti-rabbit IgG-FITC conjugated (Cat. No. A120-101F) used at a dilution of 1:100.

**Detection of human CENP-F by immunocytochemistry.**

Samples: Acetone-fixed asynchronous HeLa cells.

Antibody: Affinity purified rabbit anti-CENP-F (Cat. No. IHC-00065) used at a dilution of 1:250. *Detection:* Anti-rabbit IgG-FITC conjugated (Cat. No. A120-101F) used at a dilution of 1:100.