

Phospho Histone H3 (S10) IHC Antibody

Rabbit Polyclonal

Antigen Affinity Purified

Protein ID NP_003520.1

Catalog No. IHC-00061

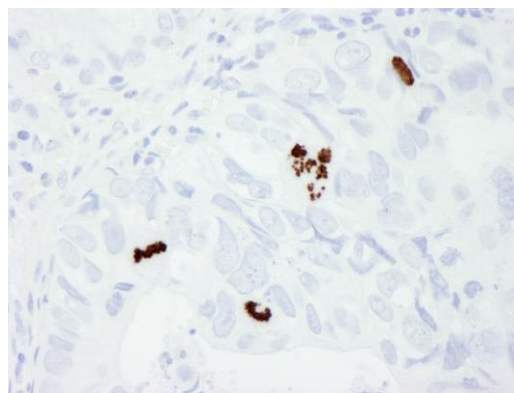
GeneID 8350

Lot No. IHC-00061-2

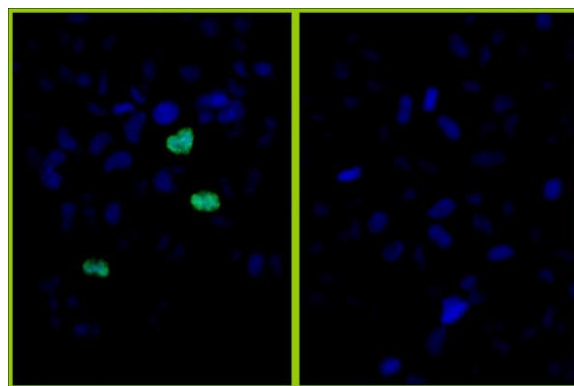


APPLICATIONS	IHC, ICC-IF
SPECIES REACTIVITY	Human, Mouse
PRESUMED REACTIVITY	Based on 100% sequence identity, this antibody is predicted to react with Rat, D. melanogaster, Zebrafish, X. laevis, X. tropicalis, Chicken, Bovine, Rabbit, Pig, Orangutan and Parasitic roundworm
AMOUNT	100 µl
CONCENTRATION	20 µg/ml
STORAGE/SHELF LIFE	2 – 8° C / 1 year from date of receipt
PHYSICAL STATE	Liquid
BUFFER	Tris-buffered Saline containing 0.1% BSA and 0.09% Sodium Azide
ISOTYPE	IgG
ORIGIN	USA
PRODUCTION PROCEDURES	Antibody was affinity purified using an epitope specific to Phospho Histone H3 (Ser10) immobilized on solid support. Immunogen for IHC-00061 was a synthetic phosphorylated peptide, which represented a portion of human Histone H3 surrounding serine 10 according to the numbering given in entry NP_003520.1 (GeneID 8350).
APPLICATIONS	Centrifuge tube to remove product from lid. Optimal working dilutions should be determined experimentally by the investigator. Prepare working dilution immediately before use. Immunohistochemistry 1:100 – 1:500 Immunofluorescence 1:100 – 1:500 (ICC)
APPLICATION NOTES	Formalin-Fixed Paraffin-Embedded Tissue 1:100 – 1:500: Epitope exposure is recommended. Epitope exposure with citrate buffer will enhance staining. Formaldehyde-Fixed Cells 1:100 – 1:500: Permeabilization with Triton-X 100 is recommended. Likely to work with frozen sections. In some cases, the antibody may be diluted further than indicated.
IHC HUMAN CONTROLS	Colon Carcinoma
ADDITIONAL INFO	https://www.bethyl.com/product/IHC-00061 Use the link above to view SDS, a current list of citations, and other product specific information.

This document certifies that this product has met all of the quality control standards defined by Bethyl Laboratories, Inc.
Eric McIntush, PhD | Chief Scientific Officer Date: June 21, 2019



Detection of human Phospho Histone H3 (S10) by immunohistochemistry. *Sample:* FFPE section of human colon adenocarcinoma. *Antibody:* Affinity purified rabbit anti-Phospho Histone H3 (S10) (Cat. No. IHC-00061) used at a dilution of 1:250. *Detection:* DAB



Detection of human Phospho Histone H3 (S10) by immunocytochemistry. *Samples:* NBF-fixed asynchronous HeLa cells. Mock phosphatase treated cells (left) or calf intestinal phosphatase-treated cells (right) immunostained for Phospho Histone H3 (S10). *Antibody:* Affinity purified rabbit anti-Phospho Histone H3 (S10) (Cat. No. IHC-00061) used at a dilution of 1:250. *Detection:* Anti-rabbit IgG-FITC conjugated (Cat. No. A120-101F) used at a dilution of 1:100.