

gamma-H2AX IHC Antibody

Rabbit Polyclonal

Antigen Affinity Purified Protein ID P16104

Catalog No. IHC-00059 GeneID 3014

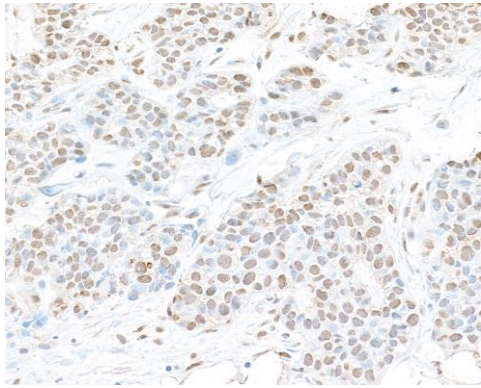
Lot No. IHC-00059-8

APPLICATIONS	IHC, ICC
SPECIES REACTIVITY	Human, Mouse
PRESUMED REACTIVITY	Based on 100% sequence identity, this antibody is predicted to react with Bovine, Dog, Rabbit, Guinea pig_10141, Pig, Monkey, Gorilla, Little brown bat and Thirteen-lined ground squirrel
AMOUNT	100 µl
CONCENTRATION	100 µg/ml
STORAGE/SHELF LIFE	2 – 8°C / 1 year from date of receipt
PHYSICAL STATE	Liquid
BUFFER	Tris-buffered Saline containing 0.1% BSA and 0.09% Sodium Azide
ISOTYPE	IgG
ORIGIN	USA
PRODUCTION PROCEDURES	Antibody was affinity purified using an epitope specific to gamma-H2AX immobilized on solid support. The epitope recognized by IHC-00059 maps to a region surrounding phosphorylated serine 139 of human histone H2AX using the numbering given for Swiss-Prot entry P16104 (GeneID 3014).
APPLICATIONS	Centrifuge tube to remove product from lid. Optimal working dilutions should be determined experimentally by the investigator. Prepare working dilution immediately before use. Immunohistochemistry 1:100 – 1:500 Immunocytochemistry 1:100 – 1:500
APPLICATION NOTES	Formalin-Fixed Paraffin-Embedded Tissue 1:100 – 1:500: Epitope exposure is recommended. Epitope exposure with citrate buffer will enhance staining. Formaldehyde-Fixed Cells 1:100 – 1:500: Permeabilization with Triton-X 100 is recommended. Likely to work with frozen sections. In some cases, the antibody may be diluted further than indicated.
IHC HUMAN CONTROLS	Breast Carcinoma, Colon Carcinoma, Ovarian Carcinoma, Testicular Seminoma
IHC MOUSE CONTROLS	Renal Cell Carcinoma, Squamous Cell Carcinoma
ADDITIONAL INFO	https://www.bethyl.com/product/IHC-00059 Use the link above to view SDS, a current list of citations, and other product specific information.

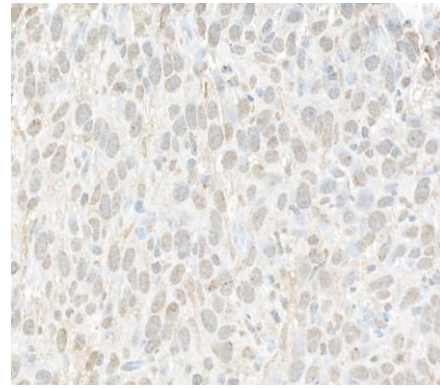
This document certifies that this product has met all of the quality control standards defined by Bethyl Laboratories, Inc.

Michael Spencer, PhD

Date: December 8, 2021



Detection of Human gamma-H2AX by Immunohistochemistry. *Sample:* FFPE section of human ovarian carcinoma. *Antibody:* Affinity purified rabbit anti-gamma-H2AX (IHC-00059 lot 8) used at a dilution of 1:100. *Detection:* DAB.



Detection of Mouse gamma-H2AX by Immunohistochemistry. *Sample:* FFPE section of mouse colon carcinoma CT26. *Antibody:* Affinity purified rabbit anti-gamma-H2AX (IHC-00059 lot 8) used at a dilution of 1:100. *Detection:* DAB.