

ASPM IHC Antibody

Rabbit Polyclonal

Antigen Affinity Purified

Protein ID NP_060606.2

Catalog No. IHC-00058

GeneID 259266

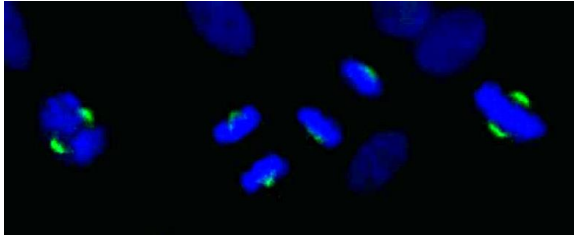
Lot No. IHC-00058-1



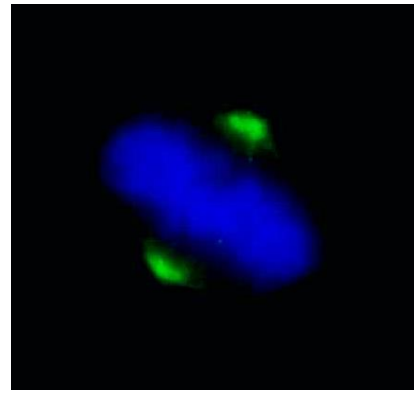
APPLICATIONS	ICC-IF
SPECIES REACTIVITY	Human
AMOUNT	100 µl
CONCENTRATION	250 µg/ml
STORAGE/SHELF LIFE	2 – 8° C / 1 year from date of receipt
PHYSICAL STATE	Liquid
BUFFER	Tris-buffered Saline containing 0.1% BSA and 0.09% Sodium Azide
ISOTYPE	IgG
ORIGIN	USA
PRODUCTION PROCEDURES	<p>Antibody was affinity purified using an epitope specific to ASPM immobilized on solid support.</p> <p>The epitope recognized by IHC-00058 maps to a region between residue 3425 and the C-terminus (residue 3477) of human ASP (Abnormal Spindle)-like, Microcephaly Associated using the numbering given in entry NP_060606.2 (GeneID 259266).</p>
APPLICATIONS	<p>Centrifuge tube to remove product from lid. Optimal working dilutions should be determined experimentally by the investigator. Prepare working dilution immediately before use.</p> <p>Immunofluorescence 1:100 – 1:500 (ICC)</p>
APPLICATION NOTES	<p>Formaldehyde-fixed cells: 1:100 – 1:500: Permeabilization with Triton-X 100 is recommended.</p> <p>Likely to work with frozen sections.</p> <p>In some cases, the antibody may be diluted further than indicated.</p>
ADDITIONAL INFO	<p>https://www.bethyl.com/product/IHC-00058</p> <p>Use the link above to view SDS, a current list of citations, and other product specific information.</p>

This document certifies that this product has met all of the quality control standards defined by Bethyl Laboratories, Inc.
Eric McIntush, PhD | Chief Scientific Officer

Date: June 21, 2019

**Detection of human ASPM by immunocytochemistry.**

Samples: NBF-fixed asynchronous HeLa cells. *Antibody:* Affinity purified rabbit anti-ASPM (Cat. No. IHC-00058) used at a dilution of 1:250. *Detection:* goat anti-rabbit IgG (h&l) FITC (Cat. No. A120-101F) used at a dilution of 1:100.

**Detection of human ASPM by immunocytochemistry.**

Samples: NBF-fixed asynchronous HeLa cells. *Antibody:* Affinity purified rabbit anti-ASPM (Cat. No. IHC-00058) used at a dilution of 1:250. *Detection:* goat anti-rabbit IgG (h&l) FITC (Cat. No. A120-101F) used at a dilution of 1:100.