

# HDAC2 IHC Antibody

Rabbit Polyclonal

Antigen Affinity Purified

Protein ID NP\_001518.1

Catalog No. IHC-00057

GeneID 3066

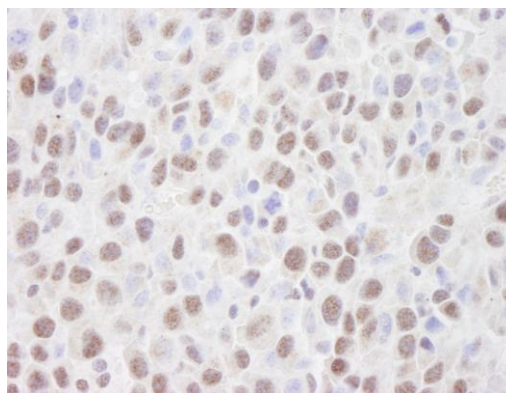
Lot No. IHC-00057-1



<b>APPLICATIONS</b>	IHC, IHC-IF
<b>SPECIES REACTIVITY</b>	Human, Mouse
<b>PRESUMED REACTIVITY</b>	Based on 100% sequence identity, this antibody is predicted to react with Orangutan, Monkey, Gorilla, Chimpanzee, Northern white-cheeked gibbon, White-tufted-ear marmoset and Tasmanian devil
<b>AMOUNT</b>	100 µl
<b>CONCENTRATION</b>	100 µg/ml
<b>STORAGE/SHELF LIFE</b>	2 – 8° C / 1 year from date of receipt
<b>PHYSICAL STATE</b>	Liquid
<b>BUFFER</b>	Tris-buffered Saline containing 0.1% BSA and 0.09% Sodium Azide
<b>ISOTYPE</b>	IgG
<b>ORIGIN</b>	USA
<b>PRODUCTION PROCEDURES</b>	Antibody was affinity purified using an epitope specific to HDAC2 immobilized on solid support.  The epitope recognized by IHC-00057 maps to a region between residue 425 and the C-terminus (residue 488) of human Histone Deacetylase 2 using the numbering given in entry NP_001518.1 (GeneID 3066).
<b>APPLICATIONS</b>	Centrifuge tube to remove product from lid. Optimal working dilutions should be determined experimentally by the investigator. Prepare working dilution immediately before use.  Immunohistochemistry 1:100 – 1:500  Immunofluorescence 1:50 – 1:500 (IHC)
<b>APPLICATION NOTES</b>	Epitope exposure is recommended.  Epitope exposure with citrate buffer will enhance staining.  Likely to work with frozen sections.
<b>IHC HUMAN CONTROLS</b>	In some cases, the antibody may be diluted further than indicated. Breast Carcinoma, Colon Carcinoma, Ovarian Carcinoma, Stomach Adenocarcinoma, Testicular Seminoma
<b>IHC MOUSE CONTROLS</b>	Squamous Cell Carcinoma
<b>ADDITIONAL INFO</b>	<a href="https://www.bethyl.com/product/IHC-00057">https://www.bethyl.com/product/IHC-00057</a> Use the link above to view SDS, a current list of citations, and other product specific information.

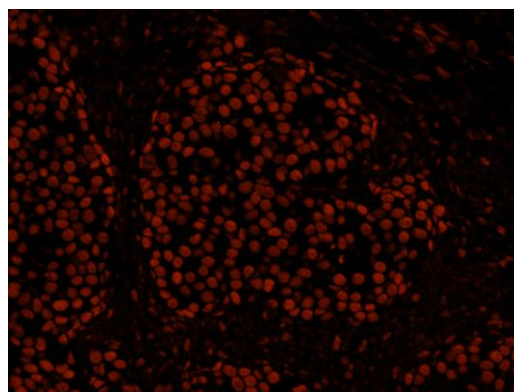
This document certifies that this product has met all of the quality control standards defined by Bethyl Laboratories, Inc.  
Eric McIntush, PhD | Chief Scientific Officer

Date: June 21, 2019

**Detection of mouse HDAC2 by immunohistochemistry.**

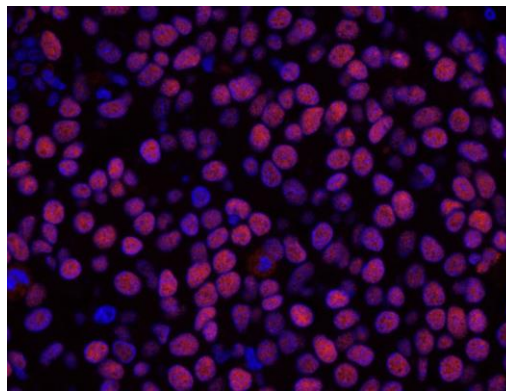
*Sample:* FFPE section of mouse squamous cell carcinoma.

*Antibody:* Affinity purified rabbit anti-HDAC2 (Cat. No. IHC-00057) used at a dilution of 1:250. *Detection:* DAB

**Detection of human HDAC2 by immunohistochemistry.**

*Sample:* FFPE section of human breast carcinoma.

*Antibody:* Affinity purified rabbit anti-HDAC2 (Cat. No. IHC-00057) used at a dilution of 1:100. *Detection:* Red-fluorescent Alexa Fluor® 555 goat anti-rabbit IgG (Invitrogen) used at a dilution of 1:500.

**Detection of human HDAC2 by immunohistochemistry.**

*Sample:* FFPE section of human breast carcinoma.

*Antibody:* Affinity purified rabbit anti-HDAC2 (Cat. No. IHC-00057) used at a dilution of 1:100. *Detection:* Red-fluorescent Alexa Fluor® 555 goat anti-rabbit IgG (Invitrogen) used at a dilution of 1:500.