

SMC3 IHC Antibody

Rabbit Polyclonal

Antigen Affinity Purified

Protein ID NP_005436.1

Catalog No. IHC-00054

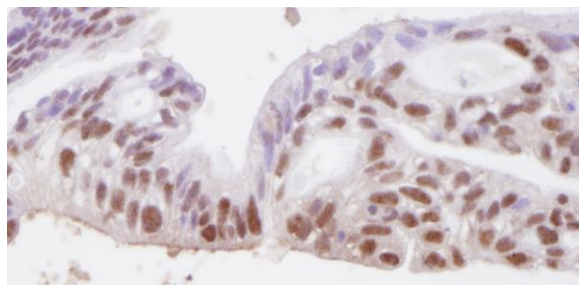
GeneID 9126

Lot No. IHC-00054-1



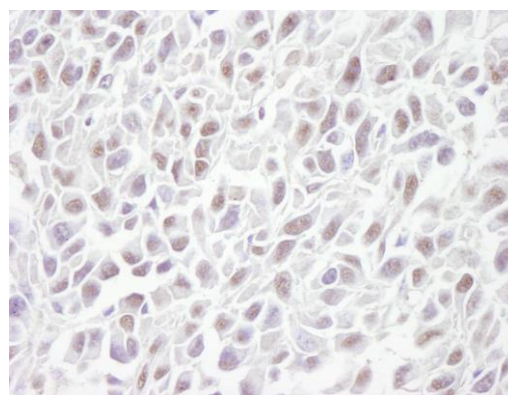
APPLICATIONS	IHC
SPECIES REACTIVITY	Human, Mouse
PRESUMED REACTIVITY	Based on 100% sequence identity, this antibody is predicted to react with Rat, Chicken, Turkey, Bovine, Dog, Horse, Rabbit, Guinea pig_10141, Pig, Panda, Orangutan, Monkey, Gorilla and Chimpanzee
AMOUNT	100 µl
CONCENTRATION	250 µg/ml
STORAGE/SHELF LIFE	2 – 8° C / 1 year from date of receipt
PHYSICAL STATE	Liquid
BUFFER	Tris-buffered Saline containing 0.1% BSA and 0.09% Sodium Azide
ISOTYPE	IgG
ORIGIN	USA
PRODUCTION PROCEDURES	Antibody was affinity purified using an epitope specific to SMC3 immobilized on solid support. The epitope recognized by IHC-00054 maps to a region between residue 1175 and C-terminal (residue 1217) of human Structural Maintenance of Chromosome 3 using the numbering given in entry NP_005436.1 (GeneID 9126).
APPLICATIONS	Centrifuge tube to remove product from lid. Optimal working dilutions should be determined experimentally by the investigator. Prepare working dilution immediately before use. Immunohistochemistry 1:100 – 1:500
APPLICATION NOTES	Epitope exposure is recommended. Epitope exposure with citrate buffer will enhance staining. Likely to work with frozen sections.
IHC HUMAN CONTROLS	In some cases, the antibody may be diluted further than indicated. Breast Carcinoma, Hodgkins Lymphoma, Laryngeal Squamous Cell Carcinoma, Non-Small Cell Lung Cancer, Ovarian Carcinoma, Prostate Carcinoma, Testicular Seminoma
IHC MOUSE CONTROLS	Squamous Cell Carcinoma
ADDITIONAL INFO	https://www.bethyl.com/product/IHC-00054 Use the link above to view SDS, a current list of citations, and other product specific information.

This document certifies that this product has met all of the quality control standards defined by Bethyl Laboratories, Inc.
Eric McIntush, PhD | Chief Scientific Officer Date: June 21, 2019

**Detection of human SMC3 by immunohistochemistry.**

Sample: FFPE section of human ovarian carcinoma

Antibody: Affinity purified rabbit anti-SMC3 (Cat. No. IHC-00054) used at a dilution of 1:250. *Detection:* DAB

**Detection of mouse SMC3 by immunohistochemistry.**

Sample: FFPE section of mouse squamous cell carcinoma.

Antibody: Affinity purified rabbit anti-SMC3 (Cat. No. IHC-00054) used at a dilution of 1:250. *Detection:* DAB