

Phospho 53BP1 (S25) IHC Antibody

Rabbit Polyclonal

Antigen Affinity Purified

Protein ID NP_005648.1

Catalog No. IHC-00053

GeneID 7158

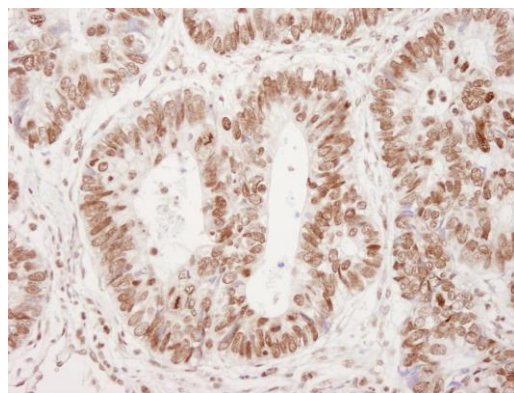
Lot No. IHC-00053-1



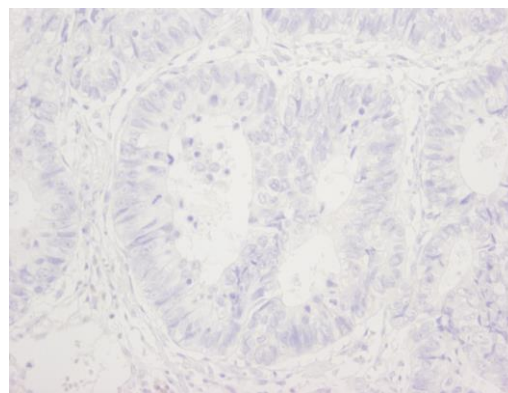
APPLICATIONS	IHC
SPECIES REACTIVITY	Human, Mouse
PRESUMED REACTIVITY	Based on 100% sequence identity, this antibody is predicted to react with Bovine, Dog, Horse, Rabbit, Guinea pig_10141, Pig, Panda, Orangutan, Monkey, Gorilla, Chimpanzee and White-tufted-ear marmoset
AMOUNT	100 µl
CONCENTRATION	100 µg/ml
STORAGE/SHELF LIFE	2 – 8° C / 1 year from date of receipt
PHYSICAL STATE	Liquid
BUFFER	Tris-buffered Saline containing 0.1% BSA and 0.09% Sodium Azide
ISOTYPE	IgG
ORIGIN	USA
PRODUCTION PROCEDURES	Antibody was affinity purified using an epitope specific to Phospho 53BP1 (S25) immobilized on solid support. Immunogen for IHC-00053 was a phosphorylated synthetic peptide, which represented a portion of human p53 Binding Protein 1 (GeneID 7158) around serine 25 according to the numbering given in entry NP_005648.1.
APPLICATIONS	Centrifuge tube to remove product from lid. Optimal working dilutions should be determined experimentally by the investigator. Prepare working dilution immediately before use. Immunohistochemistry 1:100 – 1:500
APPLICATION NOTES	Epitope exposure is recommended. Epitope exposure with citrate buffer will enhance staining. Likely to work with frozen sections. In some cases, the antibody may be diluted further than indicated.
IHC HUMAN CONTROLS	Breast Carcinoma, Colon Carcinoma, Prostate Carcinoma
IHC MOUSE CONTROLS	Squamous Cell Carcinoma
ADDITIONAL INFO	https://www.bethyl.com/product/IHC-00053 Use the link above to view SDS, a current list of citations, and other product specific information.

This document certifies that this product has met all of the quality control standards defined by Bethyl Laboratories, Inc.
Eric McIntush, PhD | Chief Scientific Officer

Date: June 21, 2019



Detection of human Phospho-53BP1 (Ser 25) by immunohistochemistry. *Sample:* FFPE section of human colon adenocarcinoma. Mock phosphatase treated section immunostained for Phospho-53BP1. *Antibodies:* Affinity purified rabbit anti-Phospho-53BP1 (Ser 25) (Cat. No. IHC-00053) used at a dilution of 1:250. *Detection:* DAB



Detection of human Phospho-53BP1 (Ser 25) by immunohistochemistry. *Sample:* FFPE section of human colon adenocarcinoma. Lambda and CIP phosphatase treated section immunostained for Phospho-53BP1. *Antibodies:* Affinity purified rabbit anti-Phospho-53BP1 (Ser 25) (Cat. No. IHC-00053) used at a dilution of 1:250. *Detection:* DAB