

# CARM1 IHC Antibody

Rabbit Polyclonal

Antigen Affinity Purified

Protein ID Q86X55

Catalog No. IHC-00045

GeneID 10498

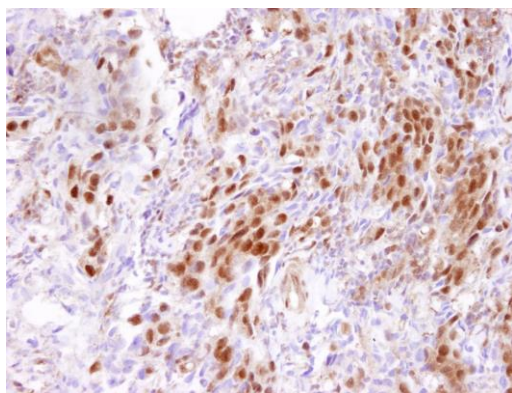
Lot No. IHC-00045-1



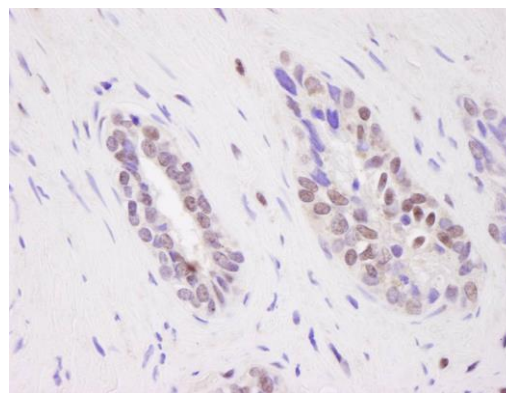
<b>APPLICATIONS</b>	IHC
<b>SPECIES REACTIVITY</b>	Human
<b>PRESUMED REACTIVITY</b>	Based on 100% sequence identity, this antibody is predicted to react with Mouse, Rat, Bovine, Dog, Pig, Orangutan, Monkey, Gorilla, Naked mole rat, Small-eared galago and Northern white-cheeked gibbon
<b>AMOUNT</b>	100 µl
<b>CONCENTRATION</b>	250 µg/ml
<b>STORAGE/SHELF LIFE</b>	2 – 8° C / 1 year from date of receipt
<b>PHYSICAL STATE</b>	Liquid
<b>BUFFER</b>	Tris-buffered Saline containing 0.1% BSA and 0.09% Sodium Azide
<b>ISOTYPE</b>	IgG
<b>ORIGIN</b>	USA
<b>PRODUCTION PROCEDURES</b>	Antibody was affinity purified using an epitope specific to CARM1 immobilized on solid support.  The epitope recognized by IHC-00045 maps to a region between residue 550 and the C-terminus (residue 585) of human Coactivator-Associated Arginine Methyltransferase 1 using the numbering given in SwissProt entry Q86X55 (GeneID 10498).
<b>APPLICATIONS</b>	Centrifuge tube to remove product from lid. Optimal working dilutions should be determined experimentally by the investigator. Prepare working dilution immediately before use.  Immunohistochemistry 1:100 – 1:500
<b>APPLICATION NOTES</b>	Epitope exposure is recommended.  Epitope exposure with citrate buffer will enhance staining.  Likely to work with frozen sections.
<b>IHC HUMAN CONTROLS</b>	In some cases, the antibody may be diluted further than indicated. Breast Carcinoma, Non-Small Cell Lung Cancer, Prostate Carcinoma, Stomach Adenocarcinoma, Testicular Seminoma
<b>ADDITIONAL INFO</b>	<a href="https://www.bethyl.com/product/IHC-00045">https://www.bethyl.com/product/IHC-00045</a> Use the link above to view SDS, a current list of citations, and other product specific information.

This document certifies that this product has met all of the quality control standards defined by Bethyl Laboratories, Inc.  
Eric McIntush, PhD | Chief Scientific Officer

Date: June 21, 2019



**Detection of human CARM1 by immunohistochemistry.**  
*Sample:* FFPE section of human breast adenocarcinoma used at a dilution of 1:100. *Antibody:* Affinity purified rabbit anti-CARM1 (Cat. No. IHC-00045). *Detection:* DAB



**Detection of human CARM1 by immunohistochemistry.**  
*Sample:* FFPE section of prostate adenocarcinoma used at a dilution of 1:500. *Antibody:* Affinity purified rabbit anti-CARM1 (Cat. No. IHC-00045). *Detection:* DAB