

CamK4 IHC Antibody

Rabbit Polyclonal

Antigen Affinity Purified

Protein ID Q16566

Catalog No. IHC-00042

GeneID 814

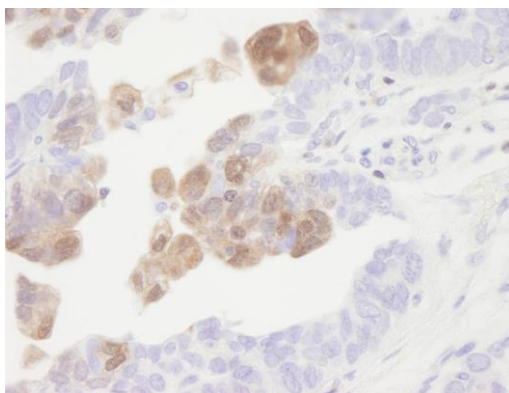
Lot No. IHC-00042-1



APPLICATIONS	IHC
SPECIES REACTIVITY	Human
PRESUMED REACTIVITY	Based on 100% sequence identity, this antibody is predicted to react with Gorilla, Chimpanzee, Northern white-cheeked gibbon and White-tufted-ear marmoset
AMOUNT	100 µl
CONCENTRATION	500 µg/ml
STORAGE/SHELF LIFE	2 – 8° C / 1 year from date of receipt
PHYSICAL STATE	Liquid
BUFFER	Tris-buffered Saline containing 0.1% BSA and 0.09% Sodium Azide
ISOTYPE	IgG
ORIGIN	USA
PRODUCTION PROCEDURES	Antibody was affinity purified using an epitope specific to CamK4 immobilized on solid support. The epitope recognized by IHC-00042 maps to a region between residue 425 and the C-terminus (residue 473) of human Calcium/Calmodulin-dependent Protein Kinase IV using the numbering given in Swiss-Prot entry Q16566 (GeneID 814).
APPLICATIONS	Centrifuge tube to remove product from lid. Optimal working dilutions should be determined experimentally by the investigator. Prepare working dilution immediately before use. Immunohistochemistry 1:100 – 1:500
APPLICATION NOTES	Epitope exposure is NOT recommended. Epitope exposure with citrate buffer will hinder staining. Likely to work with frozen sections.
IHC HUMAN CONTROLS	In some cases, the antibody may be diluted further than indicated. Ovarian Carcinoma
ADDITIONAL INFO	https://www.bethyl.com/product/IHC-00042 Use the link above to view SDS, a current list of citations, and other product specific information.

This document certifies that this product has met all of the quality control standards defined by Bethyl Laboratories, Inc.
Eric McIntush, PhD | Chief Scientific Officer

Date: June 21, 2019



Detection of human CamK4 by immunohistochemistry.
Sample: FFPE section of human ovarian tumor. *Antibody:* Affinity purified rabbit anti-CamK4 (Cat. No. IHC-00042) used at a dilution of 1:250. *Detection:* DAB