

MCM5 IHC Antibody

Rabbit Polyclonal

Antigen Affinity Purified

Protein ID NP_006730.2

Catalog No. IHC-00041

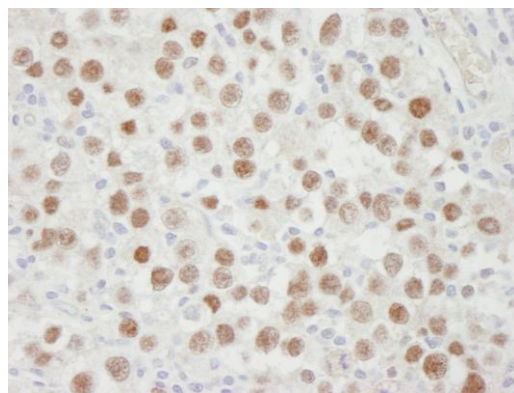
GeneID 4174

Lot No. IHC-00041-1

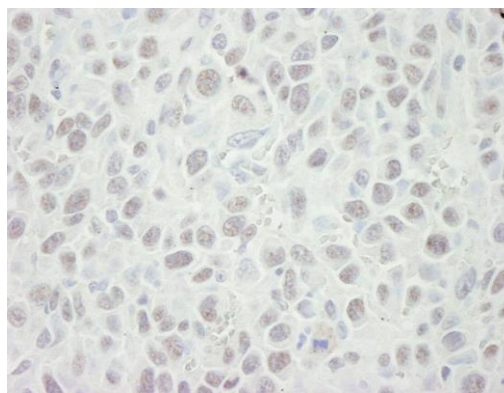


APPLICATIONS	IHC
SPECIES REACTIVITY	Human, Mouse
PRESUMED REACTIVITY	Based on 100% sequence identity, this antibody is predicted to react with X. laevis, Orangutan, Chimpanzee and Northern white-cheeked gibbon
AMOUNT	100 µl
CONCENTRATION	250 µg/ml
STORAGE/SHELF LIFE	2 – 8° C / 1 year from date of receipt
PHYSICAL STATE	Liquid
BUFFER	Tris-buffered Saline containing 0.1% BSA and 0.09% Sodium Azide
ISOTYPE	IgG
ORIGIN	USA
PRODUCTION PROCEDURES	Antibody was affinity purified using an epitope specific to MCM5 immobilized on solid support. The epitope recognized by IHC-00041 maps to a region between residue 1 and 50 of human Minichromosome Maintenance 5 using the numbering given in entry NP_006730.2 (GeneID 4174).
APPLICATIONS	Centrifuge tube to remove product from lid. Optimal working dilutions should be determined experimentally by the investigator. Prepare working dilution immediately before use. Immunohistochemistry 1:100 – 1:500
APPLICATION NOTES	Epitope exposure is recommended. Epitope exposure with citrate buffer will enhance staining. Likely to work with frozen sections.
IHC HUMAN CONTROLS	In some cases, the antibody may be diluted further than indicated. Breast Carcinoma, Colon Carcinoma, Linitis Plastica Stomach Cancer, Ovarian Carcinoma, Prostate Carcinoma, Small Cell Lung Cancer, Testicular Seminoma
IHC MOUSE CONTROLS	Squamous Cell Carcinoma
ADDITIONAL INFO	https://www.bethyl.com/product/IHC-00041 Use the link above to view SDS, a current list of citations, and other product specific information.

This document certifies that this product has met all of the quality control standards defined by Bethyl Laboratories, Inc.
Eric McIntush, PhD | Chief Scientific Officer Date: June 21, 2019



Detection of human MCM5 by immunohistochemistry.
Sample: FFPE section of human seminoma. *Antibody:* Affinity purified rabbit anti-MCM5 (Cat. No. IHC-00041) used at a dilution of 1:250. *Detection:* DAB



Detection of mouse MCM5 by immunohistochemistry.
Sample: FFPE section of mouse squamous cell carcinoma. *Antibody:* Affinity purified rabbit anti-MCM5 (Cat. No. IHC-00041) used at a dilution of 1:250. *Detection:* DAB